



Presentation from  
**2016 World Water  
Week in Stockholm**

[www.worldwaterweek.org](http://www.worldwaterweek.org)

© The authors, all rights reserved



Implemented by  
**KFW**

## »» KfW Response to the Refugee Crisis Water Sector in Jordan

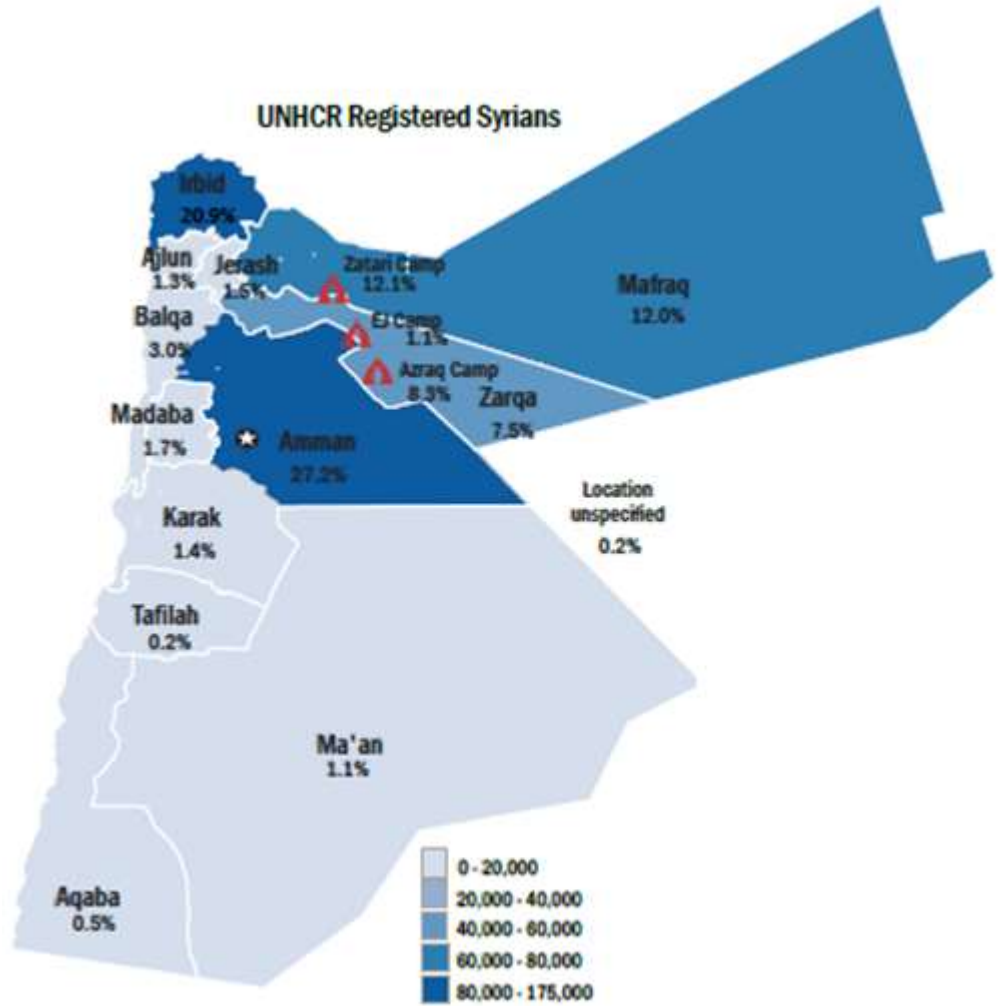
“Seeking answers to the water crisis in the MENA”  
The Stockholm WORLD WATER WEEK 2016

# »» Jordan faces huge challenges:

- ! Scarcely natural resources
- ! Rapid population growth
- ! Regional instability  
>650.000 Syrian refugees

## Consequences on Water Supply

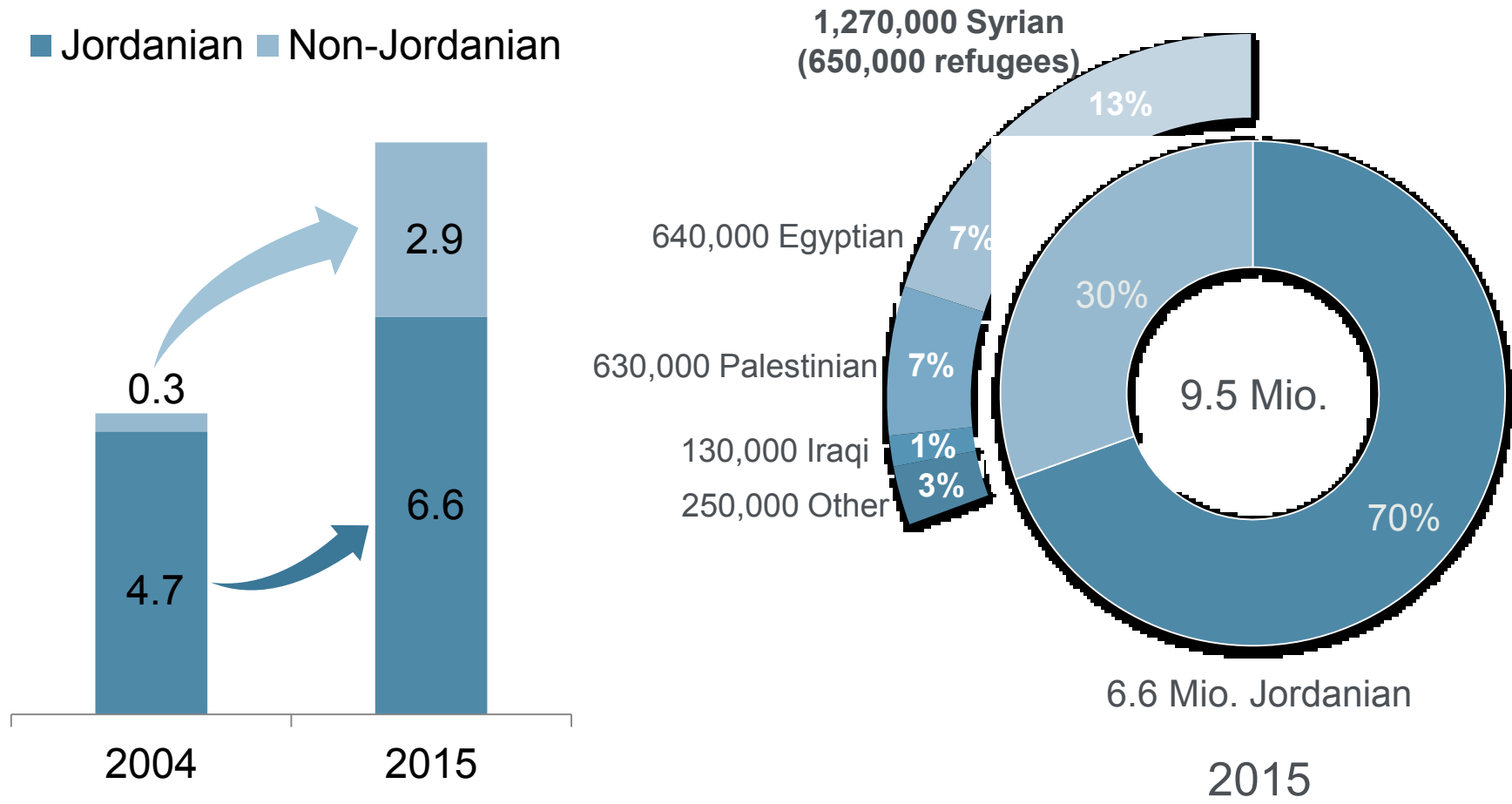
- ➔ Severe deterioration of supply situation, sustainable resources and cost recovery
- ➔ Social tension



Coloured map only reflects refugees living outside camps.

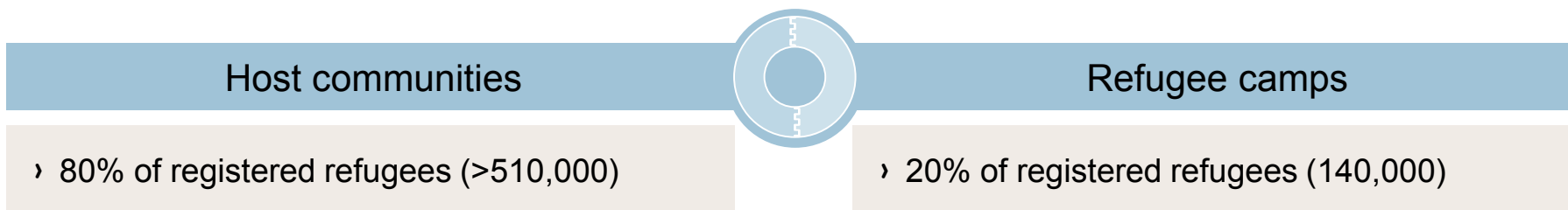
Source: UNHCR (2016)

# »» Population Growth



## »» KfW Response

<p>Approach</p>	<ul style="list-style-type: none"> <li>› Improve the supply situation for refugees <u>and</u> host communities (including refugees)</li> <li>› Trade off between sustainability and meeting demand</li> <li>› Move from small scale emergency answers to medium-term, more permanent projects</li> </ul>
<p>Country context</p>	<ul style="list-style-type: none"> <li>› Executive Development Plan (EDP)</li> <li>› Jordan Response Plan (JRP)</li> </ul>
<p>Financing volume</p>	<ul style="list-style-type: none"> <li>› Rapid response: EUR 78.5 million</li> <li>› Total: EUR 560 million</li> </ul>



# »» KFW Approach - Refugee Camps

## Transformation from Humanitarian to Sustainable Infrastructure

**Za'atari refugee camp: 80.000 people**

Water Supply - challenges:

- High operational costs – water trucking
- Inequitable distribution

Sanitation – challenges:

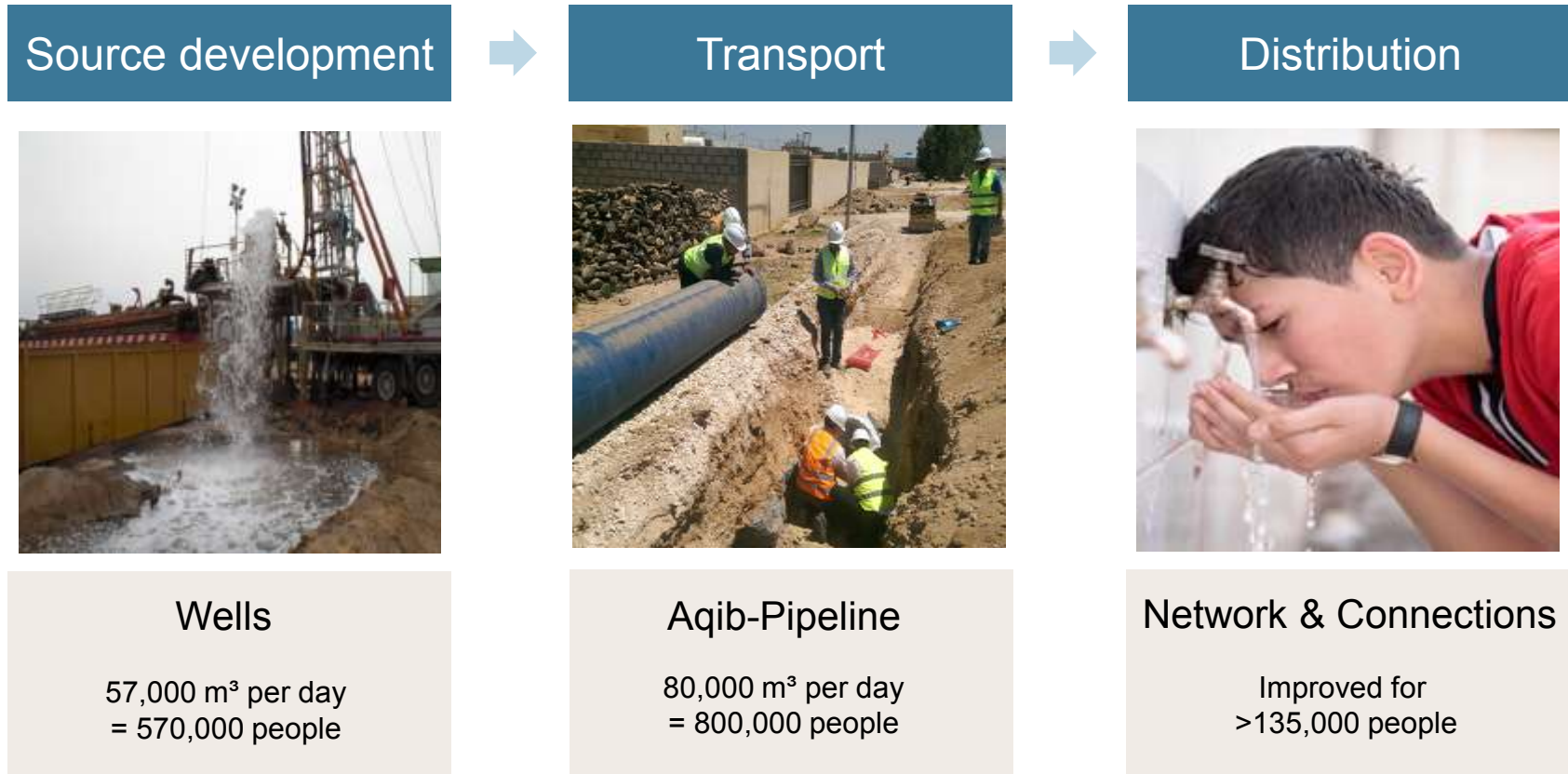
- WASH blocks – not accepted by refugees
- Desludging & disposal of wastewater



- › Cooperation with UNICEF
- › Centralised storage & distribution network
- › Sewage system/ treatment plant

- ➔ Lower operational costs
- ➔ Reliable and more hygienic source
- ➔ Groundwater protection

# »» KfW Approach - Host Communities (including refugees)







# »» Outlook

## Water Sector in Jordan

Multi-dimensional approach is needed (in cooperation with GIZ, BGR, et al.)

Total portfolio: EUR 535 Mio.

Improving access



Water efficiency



Energy efficiency



Other

Extended water networks

Extended waste water networks

Re-Use

Water loss reduction

Wells

Pump stations

Gravity

Sludge management

GW Protection

WWTP

Hydropower

Strengthening O&M

Host communities EUR 53.5 Mio.

Refugee camps > EUR 25 Mio.

»» Thank you for your attention!

Further information:

[www.kfw.de](http://www.kfw.de)

**KFW**

## »» Photo credits/references

Title slide:	Full-page background image / KfW / Stephan Sperl
Slide 2:	UNHCR (2016): „External Statistical Report on UNHCR Registered Syrians as of 31 July 2016” from: <a href="https://data.unhcr.org/syrianrefugees/country.php?id=107">https://data.unhcr.org/syrianrefugees/country.php?id=107</a>
Slide 4:	KfW Bildarchiv / auslöser photographie
Slide 5: Bottom left:	KfW Bildarchiv / auslöser photographie
Top right:	KfW Bildarchiv / auslöser photographie
Slide 6: Left :	Dorsch Int. Consultants / Norbert Honigmann
Middle:	KfW Bildarchiv / Jonas Rathfelder
Right:	KfW Photo Archive/ Photothek.net