



Presentation from
**2016 World Water
Week in Stockholm**

www.worldwaterweek.org

© The authors, all rights reserved



F.D.R.E Ministry of Water, Irrigation and Electricity

Overview of Ethiopia's 'ONE WASH' Plan and Contribution of CSO & Private sectors



By Tamiru Gedefa
WSS-PMU Coordinator

PRESENTATION OUTLINE

1. BACKGROUND

2. OVERVIEW OF OWNPN

3. CSO & PRIVATE SECTOR CONTRIBUTION

4. PROGRAM ACHIEVEMENT SO FAR

5. CHALLENGES AND THE WAY FORWARD

BACKGROUND



- Population 90,140,000, Rural 80.5 % & Urban 19.5% (2015, CSA)
- Population growth Rate 2.6%
- Access to drinking water and Clean environment recognized as **human Right & has legal provisions**
- Met MDG goal for Water Supply
- Access to water Water **61 %** as of July 2016
- Access to basic Sanitation **28 %** (JMP, 2015)

...CONT'D

ETHIOPIA WASH EVOLUTION

1992-2004

Decentralization
and Formulation
of Policy,
Strategy & Plan

2005-2012

Integration of
WASH, MoU
WASH Ministries
, Universal Access
Plan (UAP), M& E
Framework, Rural
Hygiene &
Sanitation Strategy
, CLTSH

2013 to date

WIF, One WASH
Plan, GTP-II,
IUSHS, UWWS,
Rural WASH
O&M strategy
framework &
guidelines

OVERVIEW OF ONE WASH NATIONAL PROGRAM (OWNP)

Program Name	One WASH National Program (OWNP)
Program Development objective	To improve the health and well-being of communities in rural and urban areas in an equitable and sustainable manner by increasing access to water supply and sanitation and adoption of good hygiene practices
Program Duration	Seven Years (2013-2020) in Two phases July 2013 to June 2015 and July 2015 to June 2020
Financers	GoE, Beneficiaries, Donors, CSO/NGOs
Intervention Area	Through out the Country
Components	Rural WASH, Urban WASH, Institutional WASH and Program Management & Capacity Building
Implement Modality	Community Managed Projects (CMPs), Woreda Managed Projects, NGO Managed Projects and Self-supply Projects
Guiding Principles	Integration , Harmonization, Alignment and Partnerships
Total Fund Planned	About 2.64 Billion USD

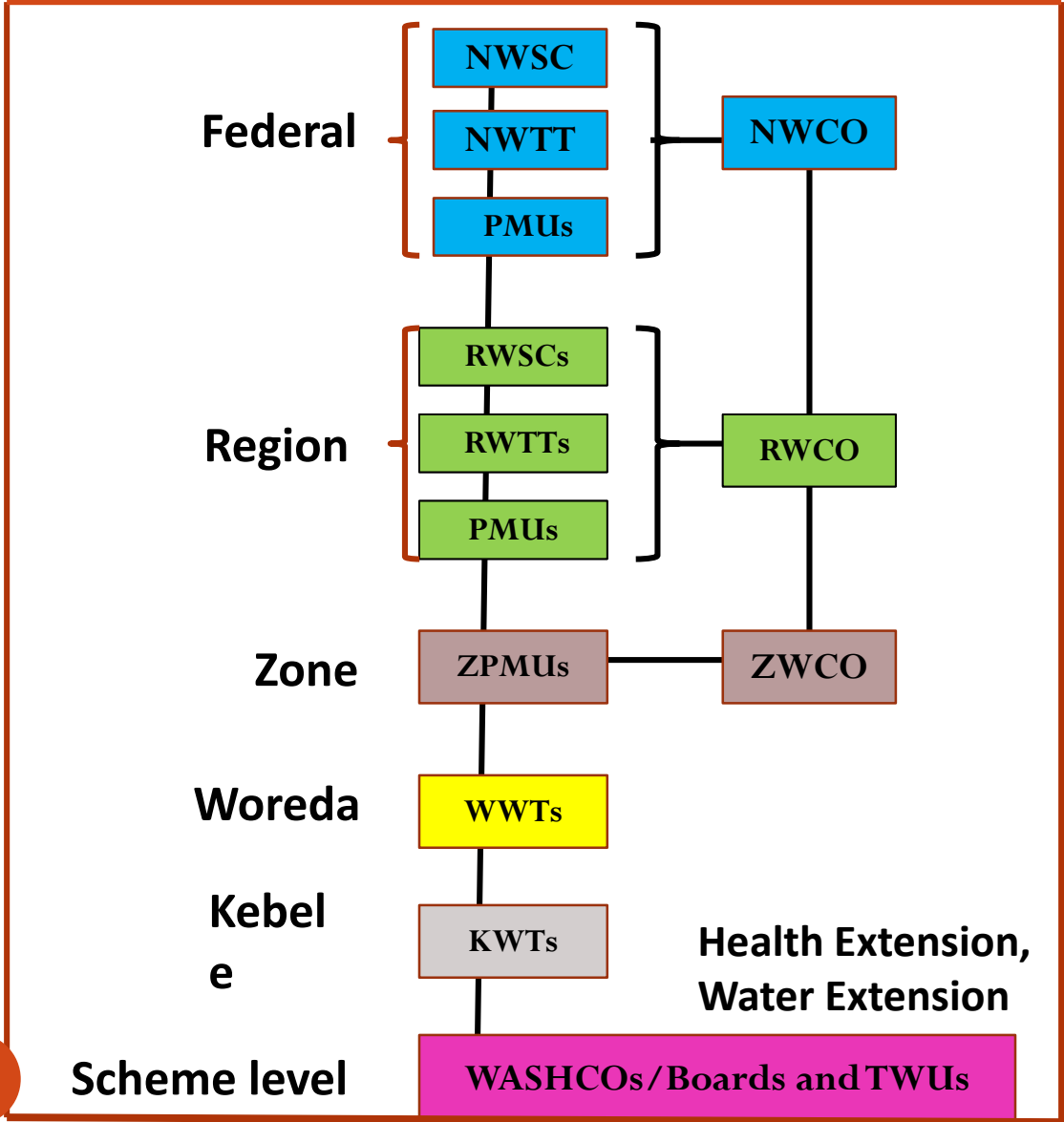
...CONT'D

- Road from small scale project funding to sector wide approach
- Government led One Plan, One Budget , One Report,...program
- OWNP contributes to better, Integration - Harmonization – Alignment – Partnership
- It aims to address the needs of:-
 - ✓ rural, urban communities,
 - ✓ schools and health facilities in a more integrated manner and
 - ✓ reduces the administrative fragmentation of WASH service delivery incorporating government-led management elements

.... Why OWNP is Special ?

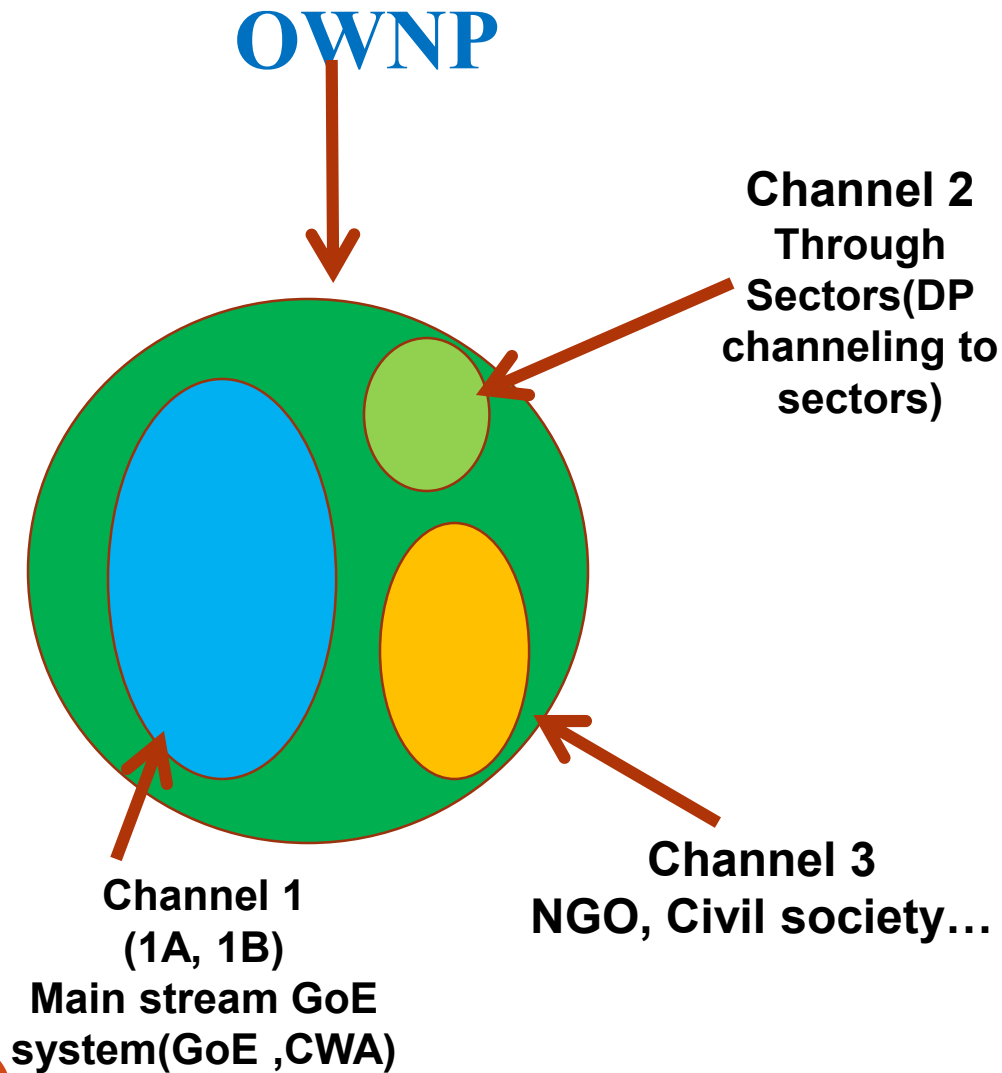
- **United:** four ministries have agreed to implement one program
- **Inclusive:** all aspects of WASH are included
- **Comprehensive:** rolled out nationwide in all the regions of Ethiopia
- **Innovative:** the first sector wide approach in the Ethiopian WASH sector
- **Effective:** pooled/Consolidated fund allowing for a greater leverage of WASH programming.
- **Progress oriented:** leads towards achieving national results faster
- **Supportive:** all stakeholders work together to move the sector forward

OWNP Coordination and implementation structure



- Governance & Guidance- *National WaSH Steering Committee (NWSC)*
- Oversight & Management, *National WaSH Technical Team (NWTT)*
- Program Implementation- *WaSH Program Management Units (In Each sector Bureaus)*
- Program Coordination - *National WaSH Coordination Office (NWCO).*

Financial Modality



- Source of funding**
- ✓ Government of Ethiopia
 - ✓ External financing agencies (investors/development partners)
 - ✓ Non-governmental organizations (NGOs)
 - ✓ Participating communities in rural areas
 - ✓ Water utilities' earnings

Program Monitoring, Review and Reporting

- Monthly and quarterly progress and financial reports from kebeles, woredas/towns, regions/cities and zones
- Status/issues reports by the NWCO and WASH Coordinators to quarterly meetings of the OneWASH Steering Committees at federal and regional levels
- Semiannual Joint Technical Reviews (JTR) and follow-up actions
- Annual Multi-Stakeholder Forums (MSF) and follow-up actions
- Infrastructure Audits/Sustainability Checks and follow-up actions

CSO and Private Sector contribution in WASH

Civil Society Organizations(CSOs)

- Out of 70 CSOs Registered, on average only about 50% reporting annual performance to Water and Sanitation Forum (WSF)
- Under the Umbrella of WSF, CSOs have contributed in:-
 - ✓ **infrastructure construction**, technology transfer, innovative solutions,
 - ✓ Capacity Building, Networking , coordination, experience exchange,
 - ✓ Resources mobilization & awareness creation, creation of partnerships with Governmental Ministries & donors
- Contributed to achievement of MDG goal in Water Supply
- Planned to contribute about 5% of budget required for OWNP

...cont'd

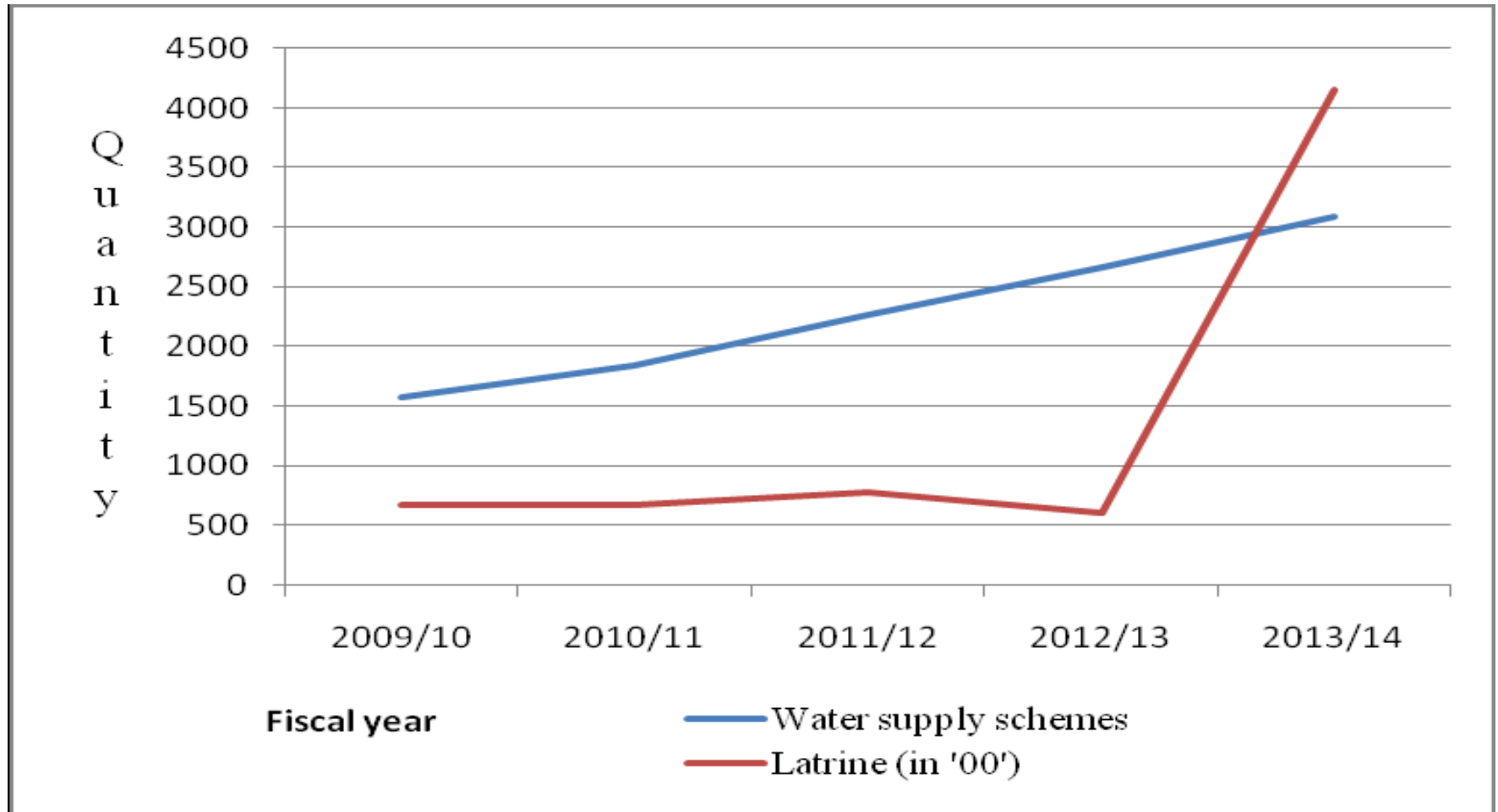
Private Sector contribution to WASH is growing but limited to :-

- Consultancy services, Civil works, Drilling of Wells and supplies of goods & equipment's
- Providing solid-waste collection and transportation services
- Providing liquid-waste collection and transportation services
- Provision of maintenance services
- Financial services (Microfinance institutions in rural WASH)

...CSO contribution in WASH (2009/10 -2013/14)

Year	Water			Latrines			Capacity building expenditure (M, ETB)
	No of schemes	Expenditure (M , ETB)	No. of beneficiaries (M, People)	No. of constructed (all types)	Expenditure (M , ETB)	No. of beneficiaries (M, people)	
2009/2010	1572	121.6	1.66	66,639	17.99	0.64	7.72
2010/2011	1837	118.35	0.73	66,466	20.43	1.28	15.43
2011/2012	2268	227.52	1.54	76,828	32.31	1.15	31.85
2012/2013	1687	342.70	1.14	41,582	41.80	0.62	6.72
2013/2014	3087	292.9	1.83	448,617		2.3	7.8
Total	10,451	1,103.07	6.90	700,132	112.53	5.99	69.52

CSO WASH Accomplishments Trends (2009/10-2013/4)



PROGRAM ACHIEVEMENT SO FAR

- Contributed for achievement MDG target of drinking Water Supply access and improvement of access to sanitation
- Contributed for better achievement of Country Plan (GTP-I) in Water supply and Sanitation and also contributing for sectors GTP-II plan
- Improved Integration ,Coordination ,Alignment ,Harmonization and Partnerships among WASH sectors, stakeholders and activities
- Enhanced enabling Environment for WASH :-
 - ✓ Integrated Urban Sanitation & Hygiene Strategy(IUSHS),
 - ✓ Rural WASH O&M Strategy Framework,
 - ✓ Urban Wastewater Management Strategy,
 - ✓ Different guidelines and training materials developed to support the program implementation and sustainability

CHALLENGES

- OWNP Financing gaps
- Sector Coordination & Integration
- WASH sector M&E and reporting system
- Limited Implementation Capacity due to staff turnover & others
- The complexity of Urban sanitation
- Limited Private sector Capacity in terms of Finance and performance
- Challenge in Capturing/Tracking the Contribution of all CSOs working on WASH sectors
- WASH schemes & facilities sustainability
- Lack of Regulatory Organ who responsible for WASH Service Provision

THE WAY FORWARD (NEXT ACTIONS...)

- Revising/ updating One WASH Document to align with GTP-II and SDG goals and targets
- Improving Integration, Alignment, Harmonization and partnerships
- Conducting WASH Inventory II , Finalization & implementation of WASH M&E-MIS
- Creating enabling Environment for private sector participation in the water supply and Sanitation activities
- Strengthening the Water and Sanitation Forum of CSOs
- Establishment of Regulatory organ for WASH services
- Improving O & M in WASH sectors
- Pulling more finance/ fund to WASH Sectors
- Strengthening both Capacity of Supply and Demand Sides

Thank you very much for your attention !!!

Tamiru Gedefa
WSS-PMU Coordinator
MoWIE

Email:- tgwami@gmail.com

For further information on ONE WASH
www.mowie.gov.et or www.cmpethiopia.org