

Rapid urbanization



Onsite sanitation



Sewers



Space



High water table

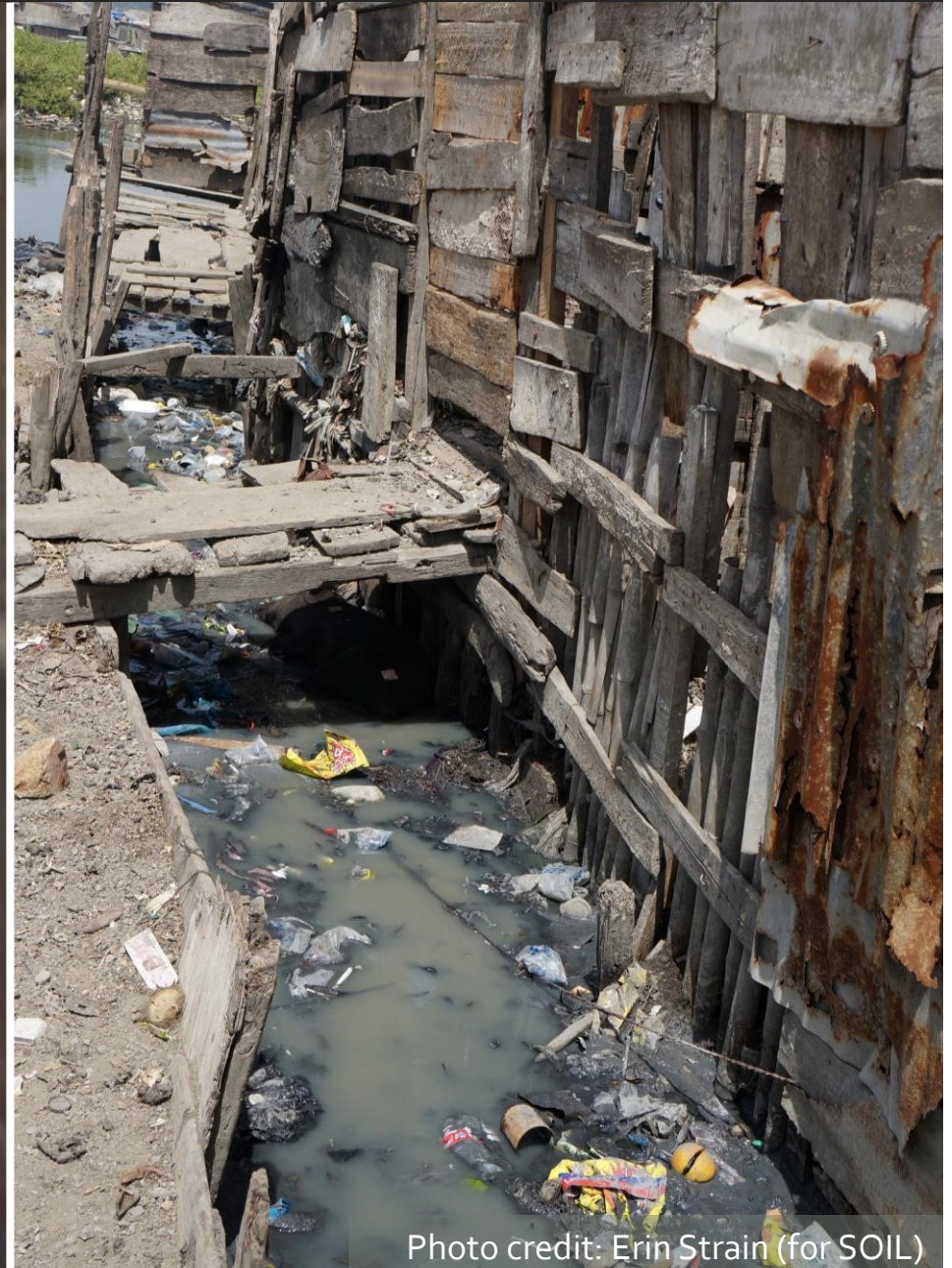


Photo credit: Erin Strain (for SOIL)

Frequent flooding



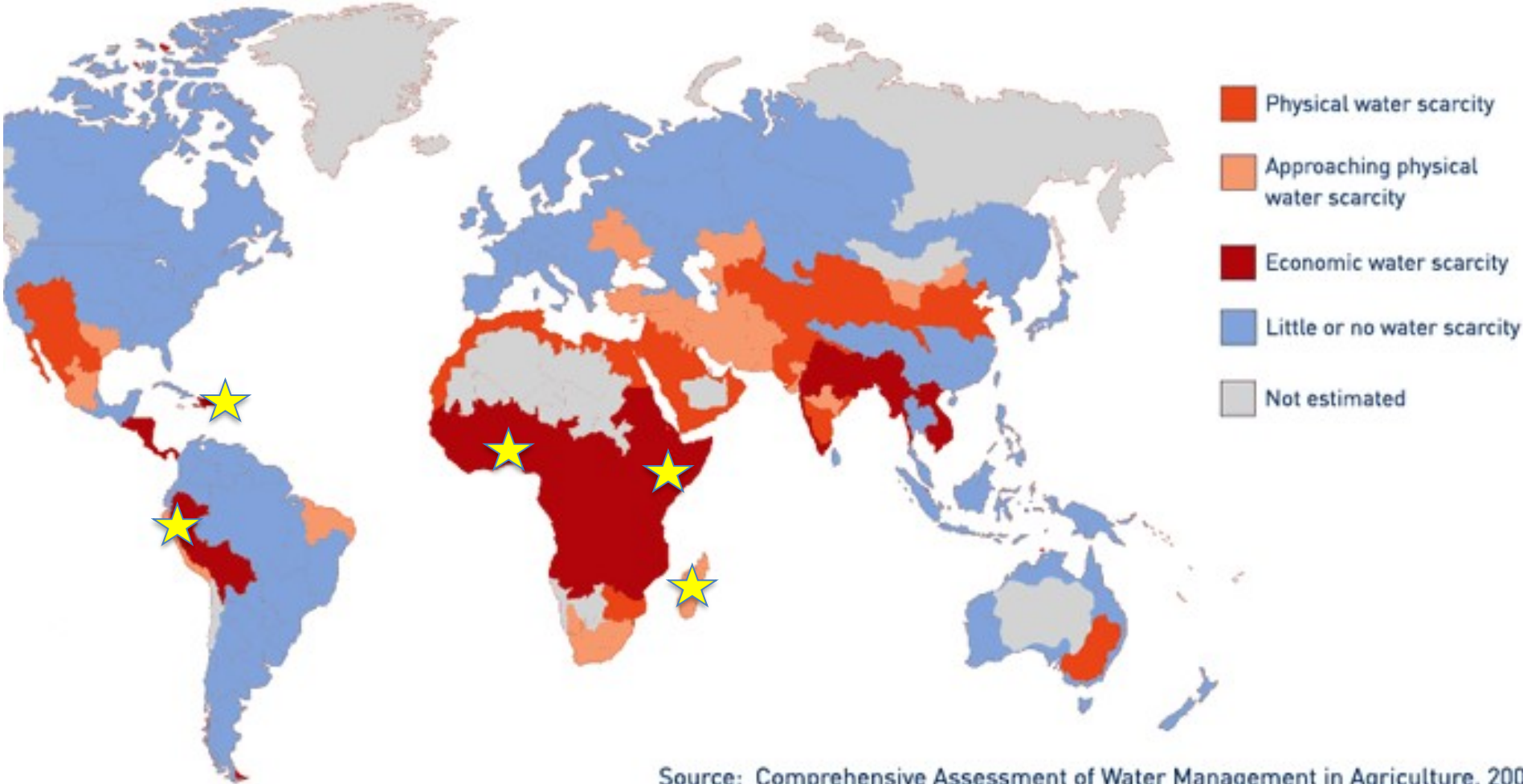
Photo credit: SOIL

Renters unwilling to invest in infrastructure and lack of government recognition



Photo credit: Slum Dwellers International

Reliable access to water




Source: Comprehensive Assessment of Water Management in Agriculture, 2007

Unsafe emptying practices



Photo credit: SuSanA

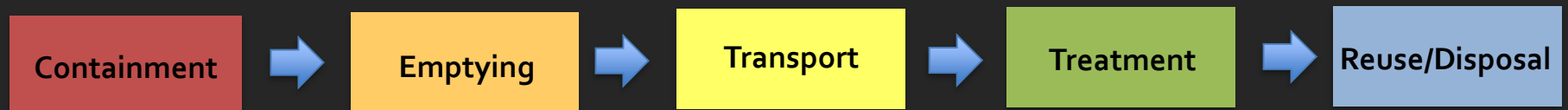
A photograph showing a man standing in a narrow, cluttered alleyway. He is covered in a thick, dark, sticky substance, likely fecal sludge, which has smeared his face, hair, and clothing. He is looking down with a somber expression. The walls are made of rough, light-colored concrete blocks. In the foreground, there are several large, crumpled plastic bags, some of which are filled with dark material. One bag in the foreground has the date '10/03/2015' printed on it. Another bag to the right has the 'CEMEX' logo visible. The lighting is dim, highlighting the grimy and unsanitary conditions of the environment.

How does CBS
improve fecal
sludge
management?

Photo credit: Andrea Bruce for National Geographic

Safely managed sanitation

A safely managed sanitation system protects people from exposure to disease-causing excreta at all points in the sanitation chain



2.5 billion people
without a toilet

Waste from 4.1 billion
people goes untreated



Photo credit: Andrea Bruce for National Geogra