

a water secure world

SWWW 2018 – MENA Focus Days :  
Session : Benefits for Ecosystems and  
Wetlands through the Nexus

Sustainable management of wetlands  
in the MENA region through the  
Nexus approach

*Dr. Sarra Touzi ,  
Senior Programmes Officer  
GWP-Med*

# Outline :

- What are the Nexus thinking Drivers ?
- What Nexus is about ?
- How the Nexus approach benefits to ecosystems and wetlands ?
- What are the challenges ?
- What initiatives to advance the Nexus agenda in the region ?
- Conclusions

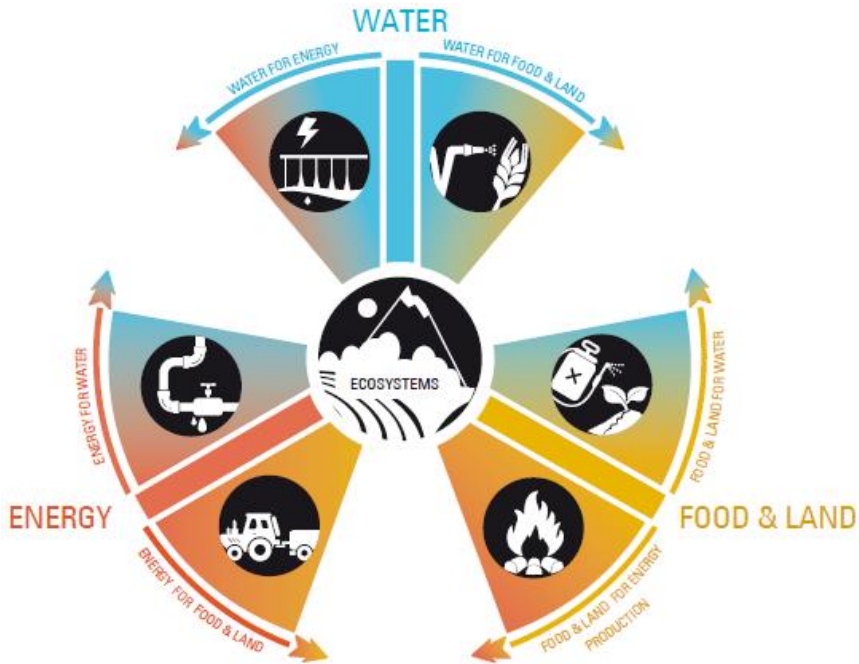
## Facts :

- Agriculture accounts for 70% of global water withdrawal
- Food production and supply chain accounts for about 30% of total global energy consumption
- 75% of all industrial water withdrawals are used for energy production
- 90% of global power generation is water-intensive
- Deterioration of wetlands worldwide, in particular coastal wetlands, is reducing the capacity of ecosystems to purify water

## Projections :

- Global water demand will increase by 55% by 2050, mainly because of growing demands from manufacturing (400% increase)
- Global food production would need to increase by 50% by 2050
- Water withdrawals for energy production could increase by 20% by 2035

# Nexus is about interlinkages



UNECE, 2015

- ⇒ better understand inter-sector and inter-resources dynamics
- ⇒ Explore synergies /adverse impacts across sectors
- ⇒ Identify solutions allowing balance between different needs based on compromise and trade-offs negotiations
- ⇒ Make policies and actions more coherent across sectors

- End goal : sustainable and integrated management of natural resources
- IWRM can serve as the Nexus 'water path'

# Benefits for Ecosystems and Wetlands

- ⇒ Conceptual framework that helps to think across sectors and position ecosystems on the heart of the discussions
- ⇒ Enforces to examine the issues/solutions beyond the one sector : examine different scenarios for the various sectors while evaluating the direct and indirect effects between these sectors
- ⇒ Facilitates finding solutions based on transparent evaluation of trade-offs
- ⇒ Informed stakeholder dialogues to promote nature based solutions

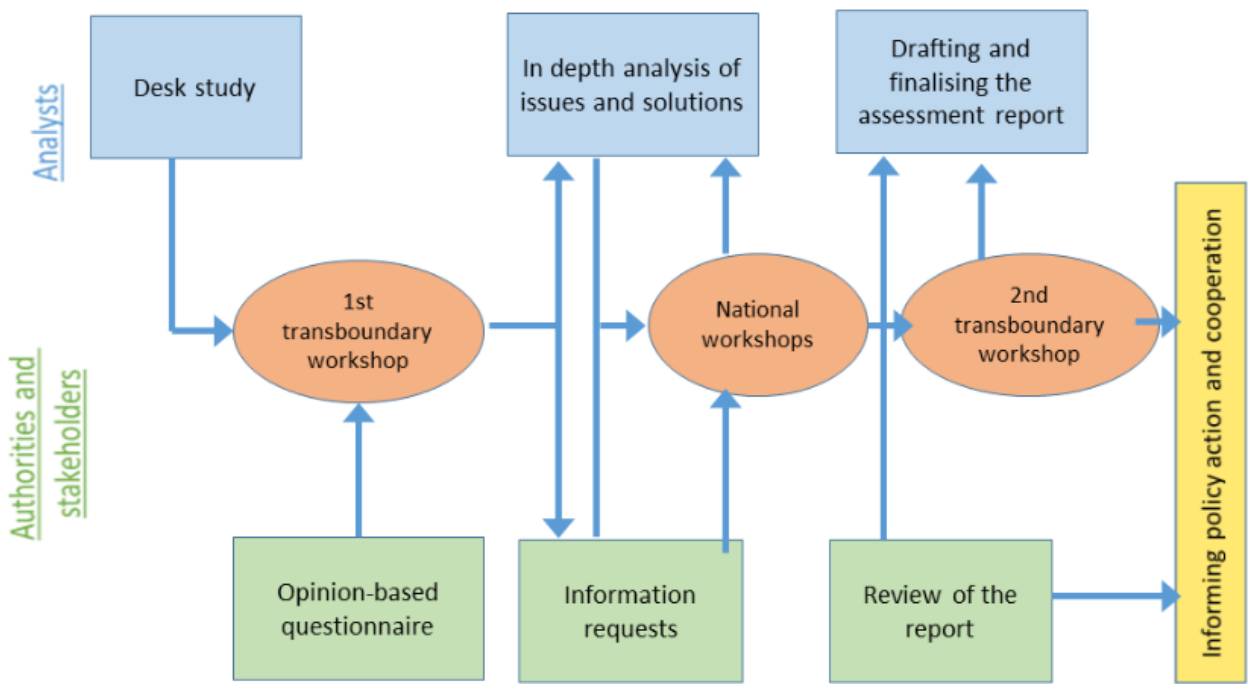
# Challenges

- ⇒ Lack of political willgness to have Nexus dialogues
- ⇒ Demanding stakeholders dialogues (high number of stakeholders, conflicting intersts)
- ⇒ Limited knowledge of stakeholders : disinterest to the dialogues
- ⇒ Convening power and leadership for the decision making

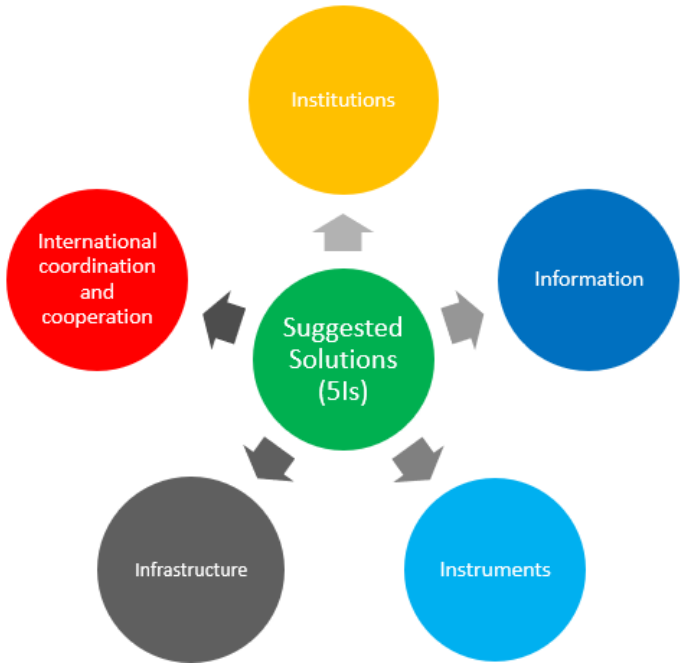
# Advancing the Nexus Agenda in the region

## Nexus Dialogue on the NWSAS : Algeria, Libya, Tunisia

- Partners : GWP-Med, UNECE and OSS
- SIDA support in synergy with WACDEP



	Water	Energy	Land/Agriculture	Ecosystem services
Water		*Energy (ENE) to Water (WAT) 1 * ENE to WAT 2 Etc.	* Land/Agriculture (AGR) to WAT 1 * AGR to WAT 2 Etc.	*Ecosystem (ECO) to WAT 1 Etc.
Energy	*WAT to ENE 1 * WAT to ENE 2 Etc.		* AGR to ENE 1 Etc.	*ECO to ENE 1 Etc.
Land/Agriculture	*WAT to AGR 1 * WAT to AGR 2 -	*ENE to AGR 1 * ENE to AGR 2		*ECO to AGR 1 * ECO to AGR 2
Ecosystem services	*WAT to ECO 1 * WAT to ECO 2	* ENE to ECO 1 Etc.	* AGR to ECO 1 * AGR to ECO 2 Etc.	



# Capacity Building Platform on Water Management and Abstraction

- Partners : WI, GWP-Med ,IUCN Med, IUCN ROWA, MedWet, Tour du Valat, WWF-NA
- MAVA Foundation support

Aims to promote sustainable water use by bringing wetland needs and their contributions to society into dialogues around water allocation and management, through :

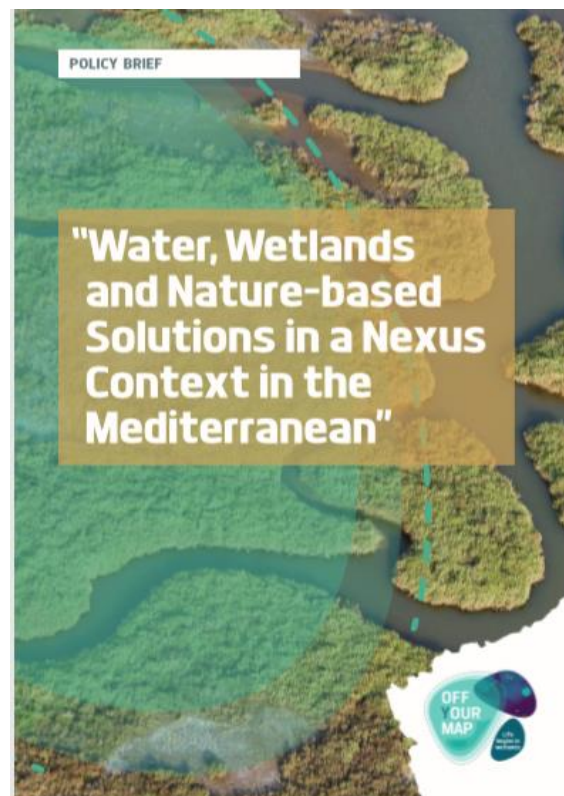
- Knowledge platform development with focus on IWRM and IRBM implementation mobilizing Nexus
- Empowering CSOs to influence the policy, planning related to water investments and to engage with private sector
- Enabling water basin agencies and governmental bodies to fully integrate an ecosystems approach and WEFE Nexus in planning

# Communication campaign on the value of coastal wetlands

- Partners : MedWet, GWP-Med, Birdlife, IUCN-Med, PAP-RAC, WI, Diversearth, MedINA, Plan Bleu, WWF MedPO; MEDPAN, Tour du Valat
- MAVA Foundation support

Aims to improve knowledge about the functions and values of Mediterranean coastal wetlands as well as the benefits of an integrated land/sea interface management

<http://offyourmap.org/>



# Conclusions

- ⇒ Nexus supports resource securities: water as the entry point
- ⇒ Achieve policy coherence towards sustainable development
- ⇒ Inclusive multi-stakeholders dialogues platforms
- ⇒ Co-optimized solutions (technology, nature based-solutions, ...)
- ⇒ Innovative financial mechanisms (foster private sector participation,...)

# THANK YOU