

# ENVIRONMENTAL- ECONOMIC ACCOUNTING FOR WATER IN BRAZIL



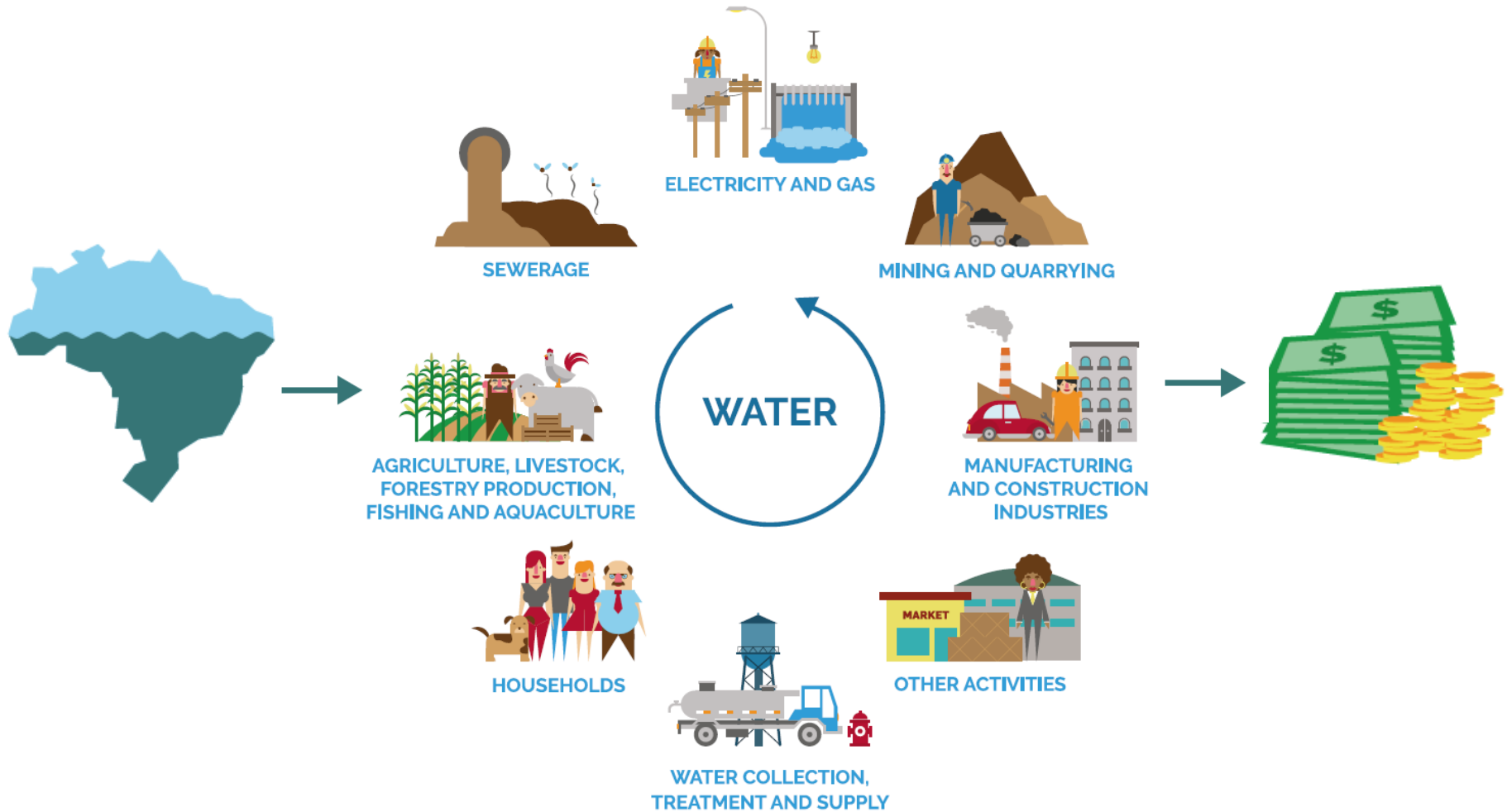
SECRETARIAT OF  
WATER RESOURCES AND  
ENVIRONMENTAL QUALITY

 **IBGE**

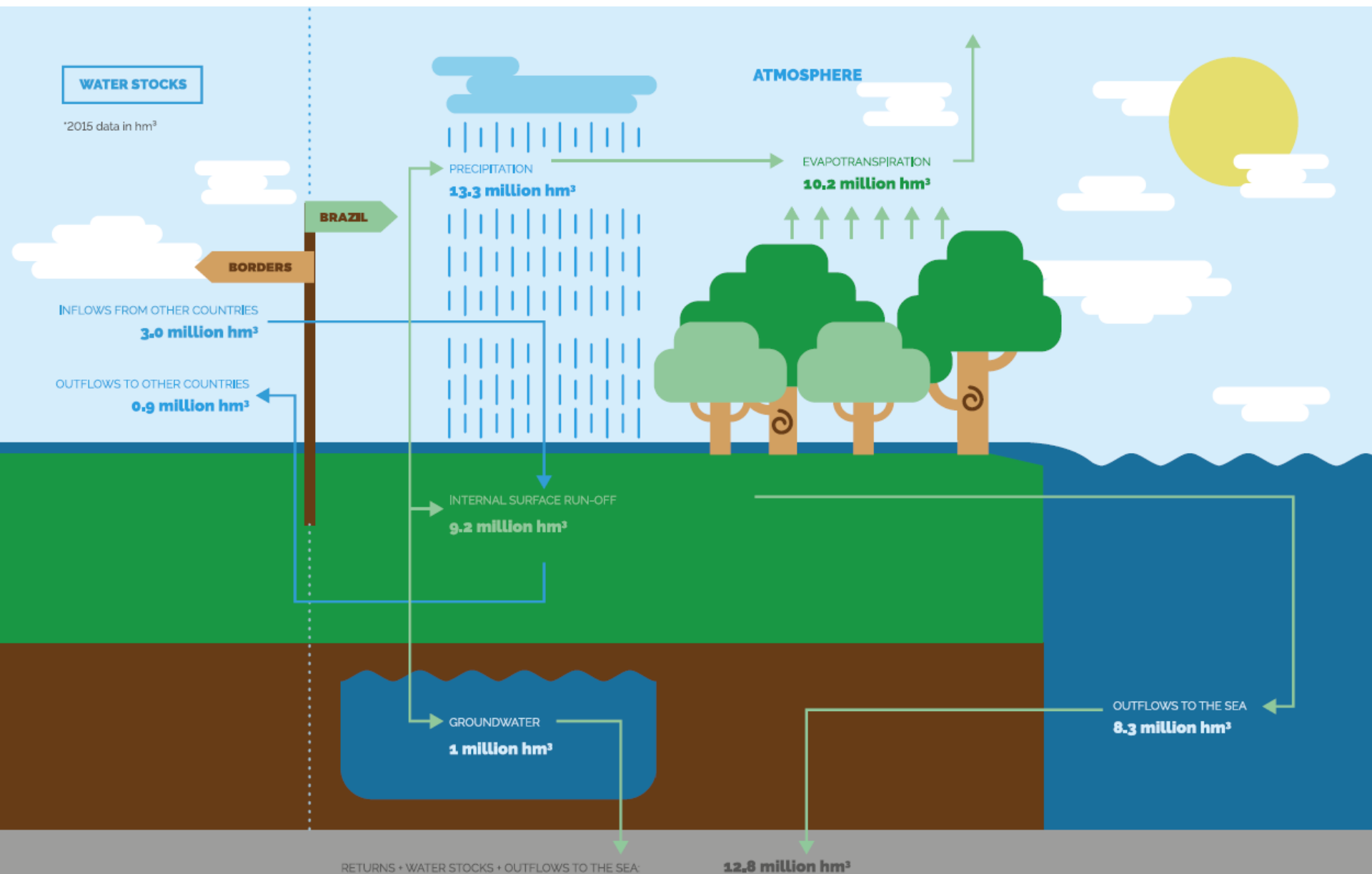
 **ANA**

# System of Environmental Economic Accounting (SEEA-Water)

**physical** data + **monetary** data



# Water Stocks – Brazil



# Water Uses – Brazil

## TOTAL WATER WITHDRAWN IN BRAZIL (ANNUAL MEAN)



# Irrigated areas



Irrigated Rice



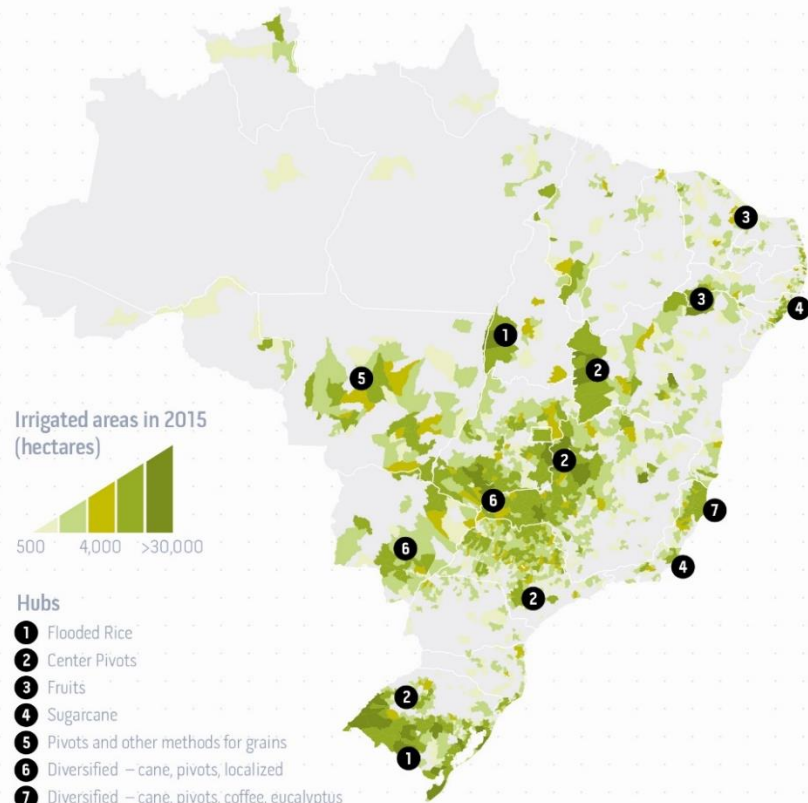
Sugarcane



Center Pivot



Others



Percentage distribution of predominant type

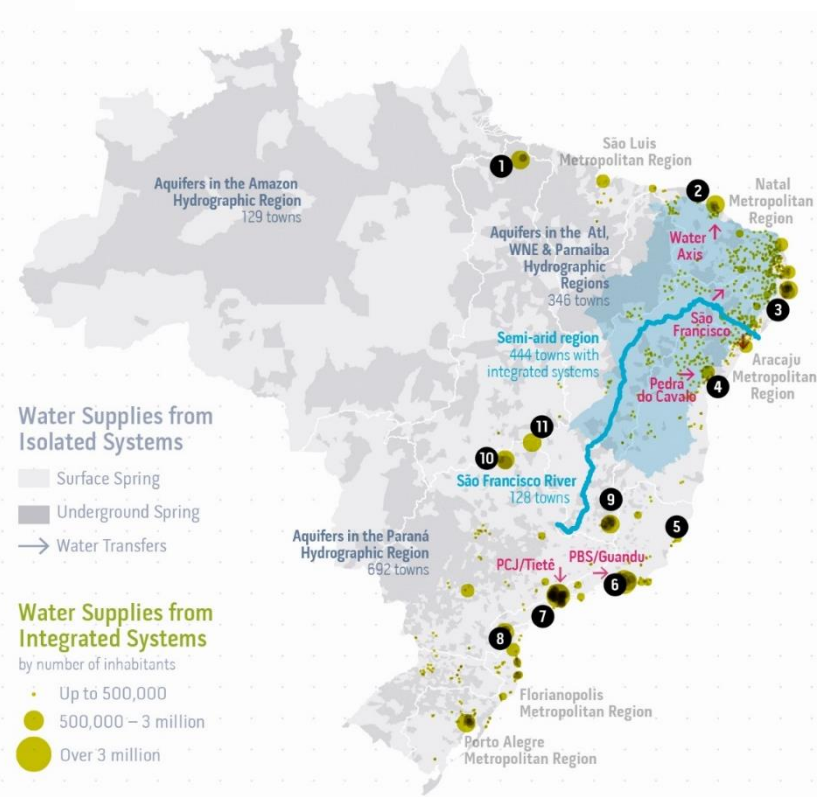
- Flooded Rice
- Sugarcane
- Center Pivots
- Others



Percentage distribution of predominant type by Region



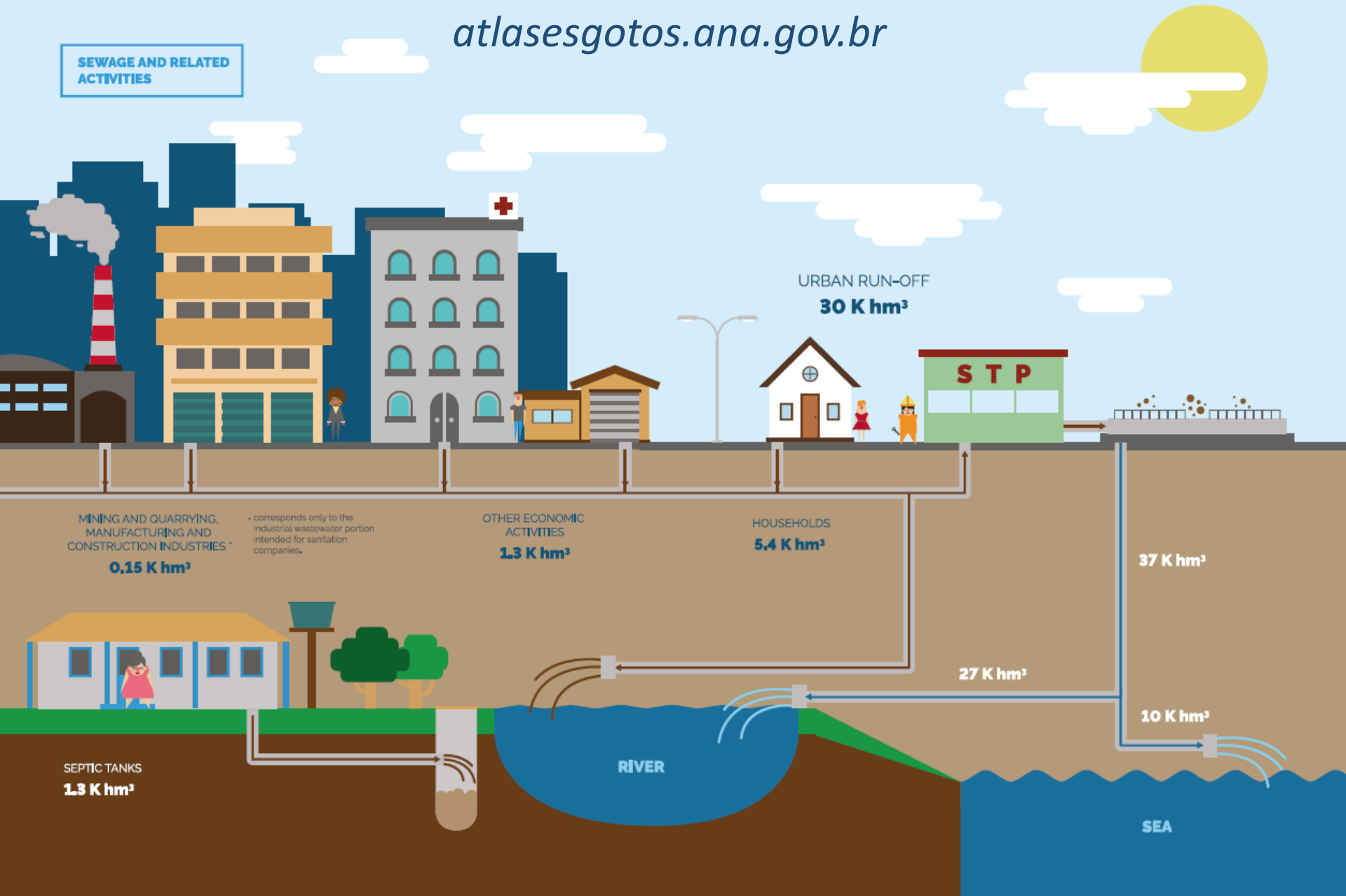
# Urban water supply



# Returns to environment

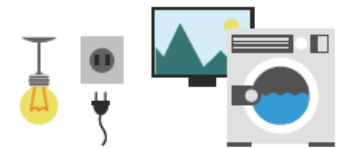
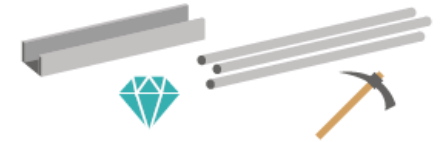
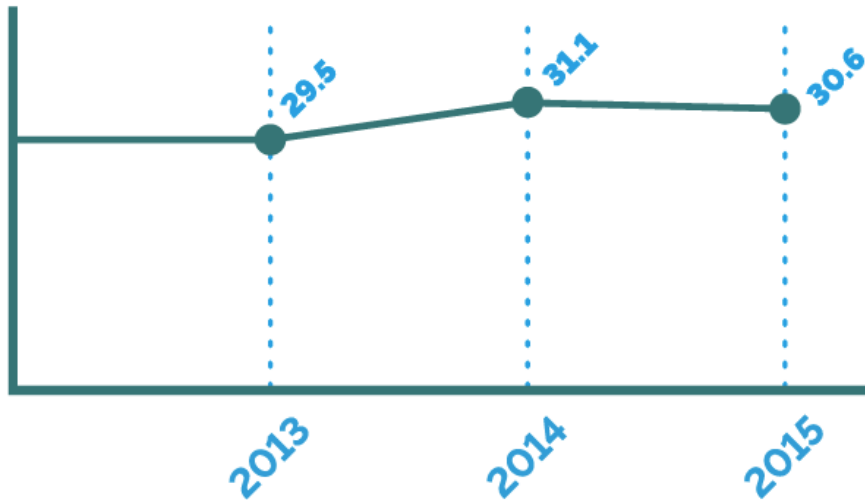
*atlasesgotos.ana.gov.br*

SEWAGE AND RELATED  
ACTIVITIES

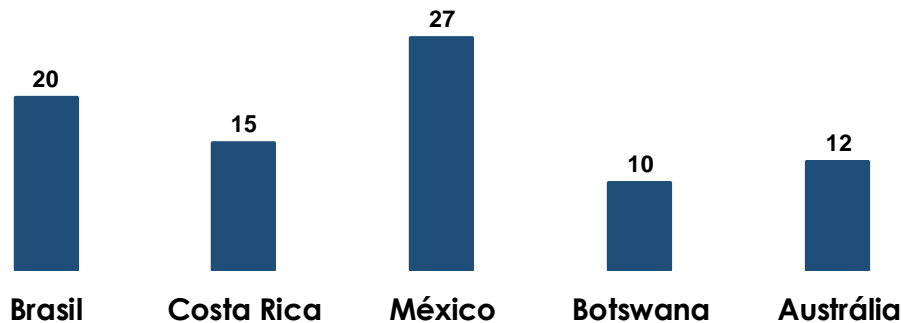




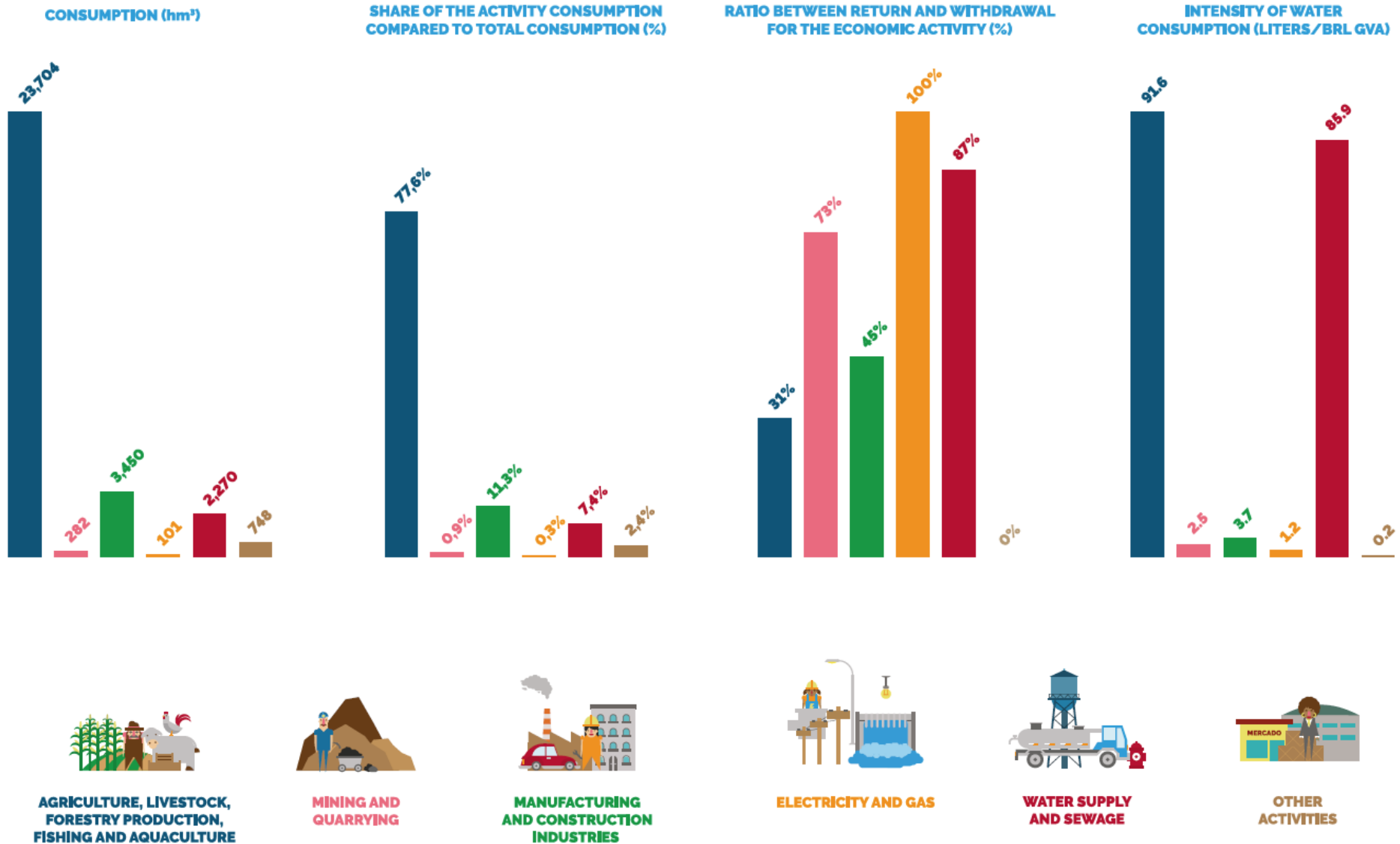
# Total water consumption – (in K hm<sup>3</sup>)



Water intensity consumption by economies in 2015 (L/US\$)



# Intensity in water consumption – 2015

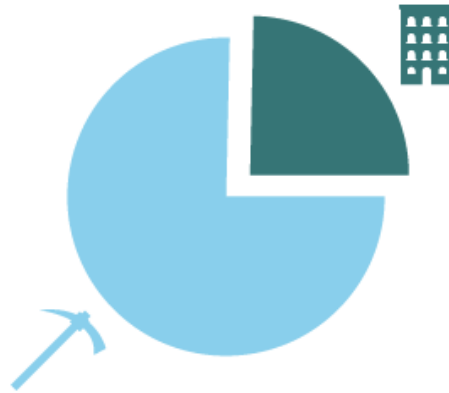




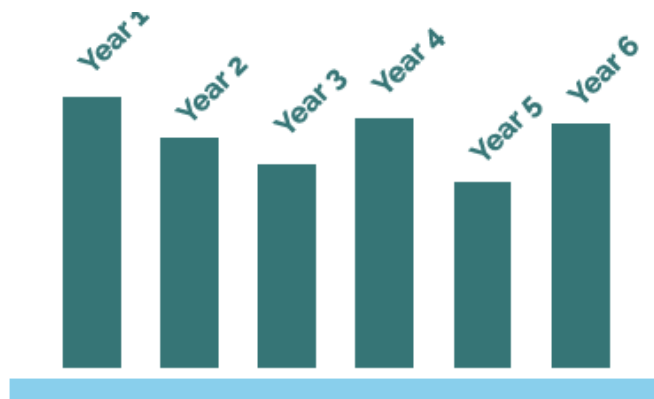
# Where should it be used?



COMPARISON WITH  
OTHER COUNTRIES



COMPARISON AMONG  
ECONOMIC SECTORS

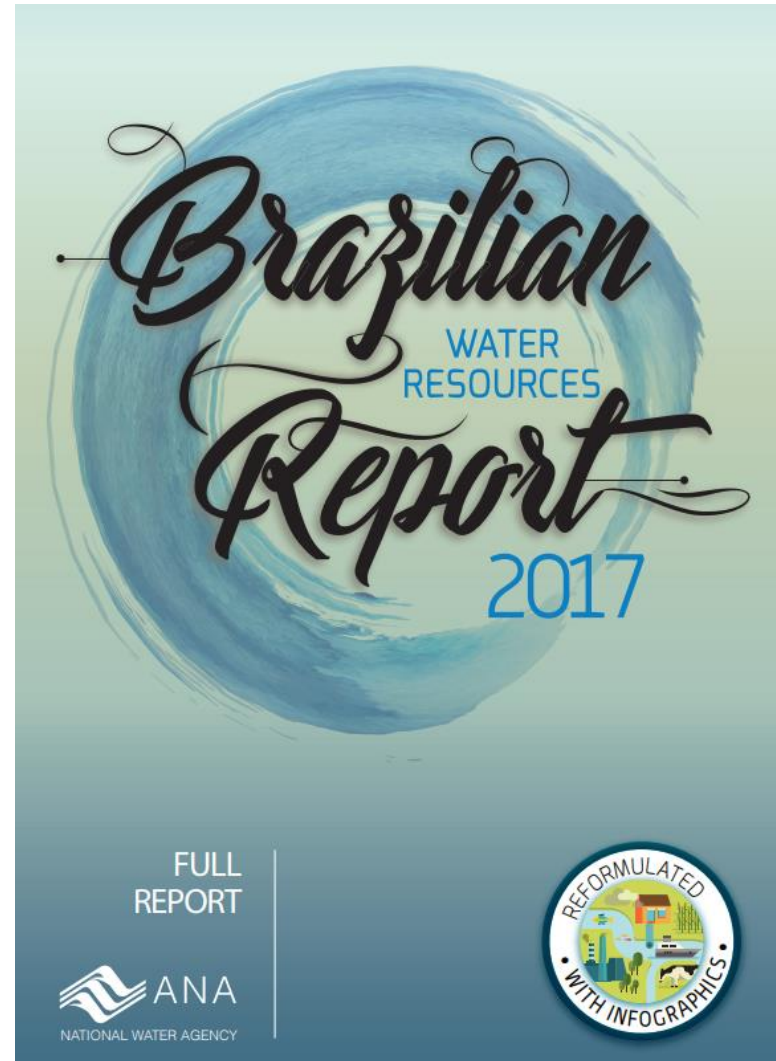


TIME ANALYSIS

More information:

**Brazilian Water Resources Report**

[conjuntura.ana.gov.br](http://conjuntura.ana.gov.br)





# Thank you!

**Sérgio Ayrimoraes**

Water Resources Planning Superintendent

ssoares@ana.gov.br  
(+55)(61) 2109-5208

**[www.ana.gov.br](http://www.ana.gov.br)**