



Presentation from
**2016 World Water
Week in Stockholm**

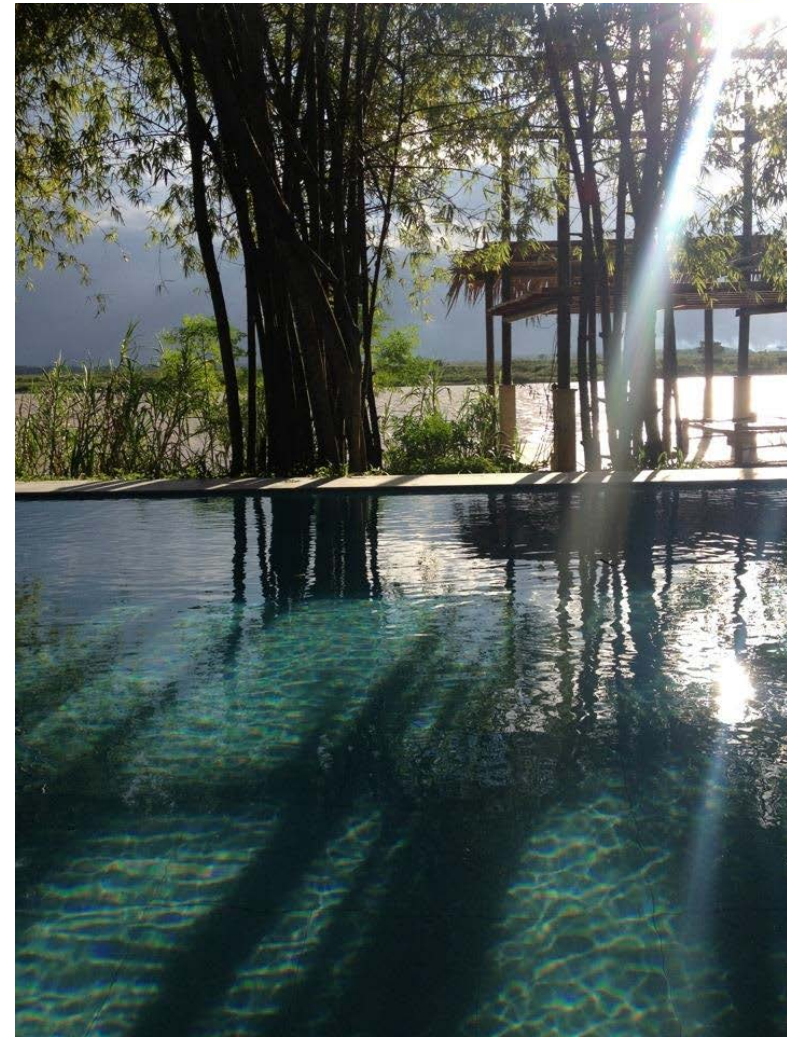
www.worldwaterweek.org

© The authors, all rights reserved



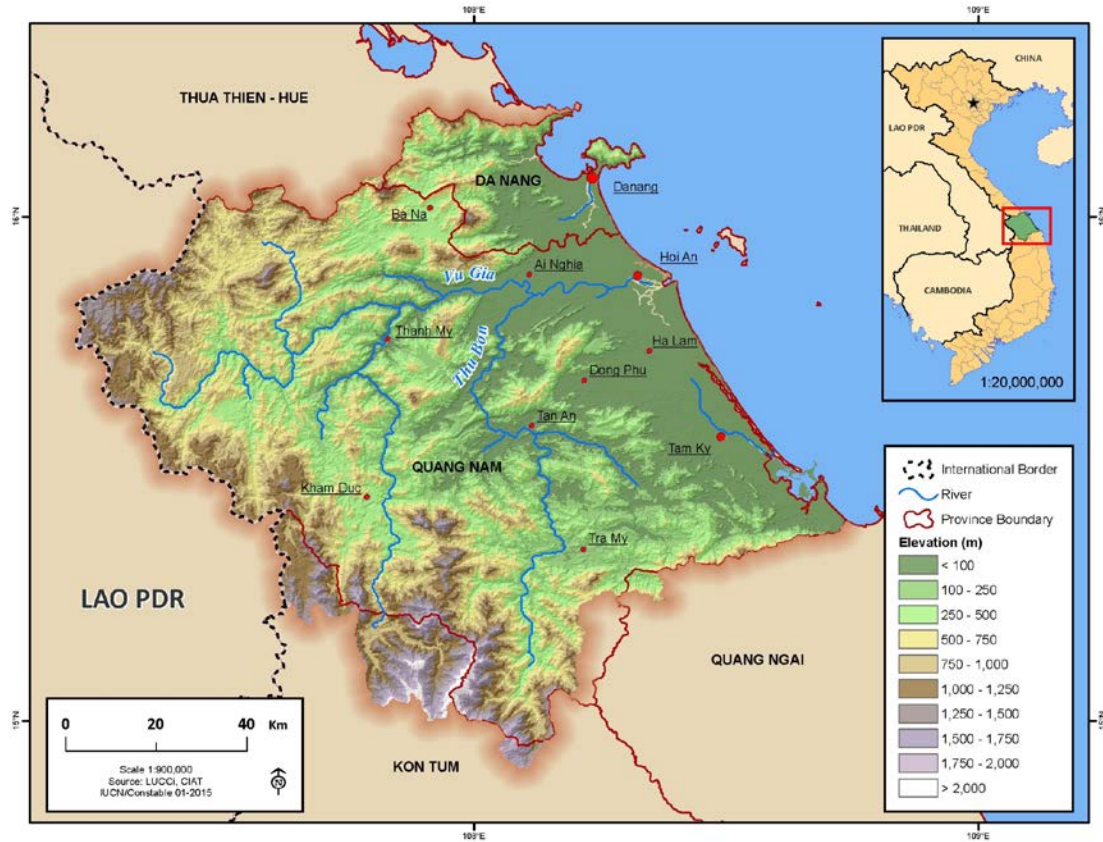
Lesson Learn from application Ridge to Reef approach in Vu Gia – Thu Bon, River Basin, Central of Viet Nam

Bui Thi Thu Hien
IUCN Viet Nam



Vu Gia-Thu Bon River Basin

- Central Vietnam characterized by small, steep, highly seasonal river basin
- High levels sediment have produced a fertile estuary
- Upstream impacts are quickly transmitted downstream





'Hot' development



The construction of various **small and large hydropower plants**, and disorderly exploitation of minerals (sand and gold mining) and timber on the Vu Gia – Thu Bon river basins have caused negative impacts on the environment, the ecosystem and the livelihoods of **not only communities on the river basins but also on those in the coastal area.**



Hydropower Dak Mi 4 Reservoir (2012)





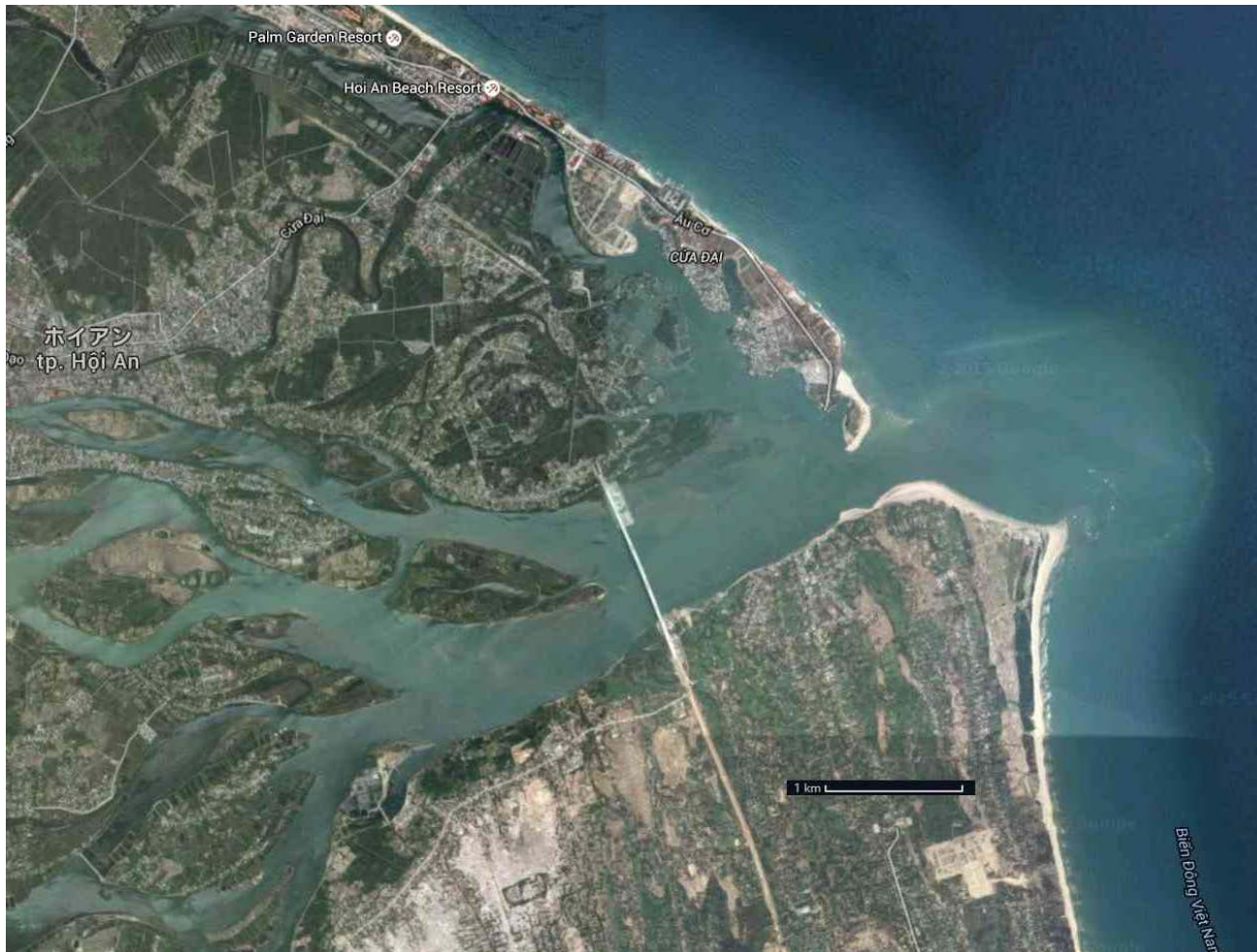
Sand mining on Thu Bon River





EROSION Thu Bon - River Bank

Cua Dai Bridge (2013)



Coastal erosion







Why?



- Water resource management has not been implemented at river basin level;
- The dynamic and unsustainable economic development and the lack of appropriate water resource management for Vu Gia – Thu Bon river basin and coastal zone of Da Nang – Quang Nam;
- Lack of coordination and cooperation among sectors and localities in integrated management of Vu Gia – Thu Bon river basin
- The state has not receded from economic life as much as reconfigure itself to benefit from market opportunities.

(J. Pincus, Why Doesn't Vietnam Grow Faster? State Fragmentation and the Limits of Vent for Surplus Growth, *Journal of Southeast Asian Economies*, Vol. 32, No. 1, 2015)



Connectivity



- Integrated Water Resource Management (IWRS) (Vu Gia – Thu Bon River Basin) and Integrated Coastal Management (ICM) (Quang Nam – Da Nang) have been established but **working separately and inefficiently implemented**
- There is a lack of political support from the local governments and necessary policies to maintain the new management modality.
- ICM plan implementation has encountered several difficulties, obstacles and **not taken impacts from river basins into account.**



Solutions



- Apply Ridge to Reef (R2R), new approach which emphasizes spatial connectedness in development to achieve long-term goals.
- Establish appropriate policies and actions plan
- Establish a river basin committee with the function of integrated watershed and coastal management



Voice from local people: specific solution



- *“...it is important to check all reservoirs in the mountain, disqualified reservoirs should not be allowed to store water. Small hydropower plants should not be constructed: they are land-consuming, cash-consuming, and efforts-consuming to the State, and life-threatening to human beings, large-scale hydropower plants shall be developed by investors with “a conscience”.*
- *It is also necessary to excavate river estuary, sea estuary, river beds and even culverts and drains inside the city to ensure good drainage of water, otherwise, it would be disastrous....”.*

Nguyen Thi Ung, Hoi An citizen (74 year's old)



Recommendation



- Adaptive governance institutions, awareness enhancement, establishment of cooperation for effective governance;
- Strengthened inter-provincial and inter-sectoral coordination, sustainability in development should be ensured and conflicts in water use in river basins and water exploitation in coastal zones should be lessened.
- The adoption of R2R approach in management of Vu Gia – Thu Bon river basin and Da Nang – Quang Nam coastal zones will represent a national case study for Viet Nam and should be implemented with an appropriate roadmap.





Let's discuss!



“I used to think the top environment problems were biodiversity loss, ecosystem collapse and climate change I thought that with 30 years of good science, we could address those problem.

...But I was wrong!

The top environmental problems are selfishness, greed and apathy...

... and to deal with those we need a spiritual and cultural transformation..

and .. we scientist don't know how to do that”

Gus Speth



Acknowledgements

- Swedish Agency for Marine and Water Management
- IUCN and MFF