



Presentation from
**2016 World Water
Week in Stockholm**

www.worldwaterweek.org

© The authors, all rights reserved



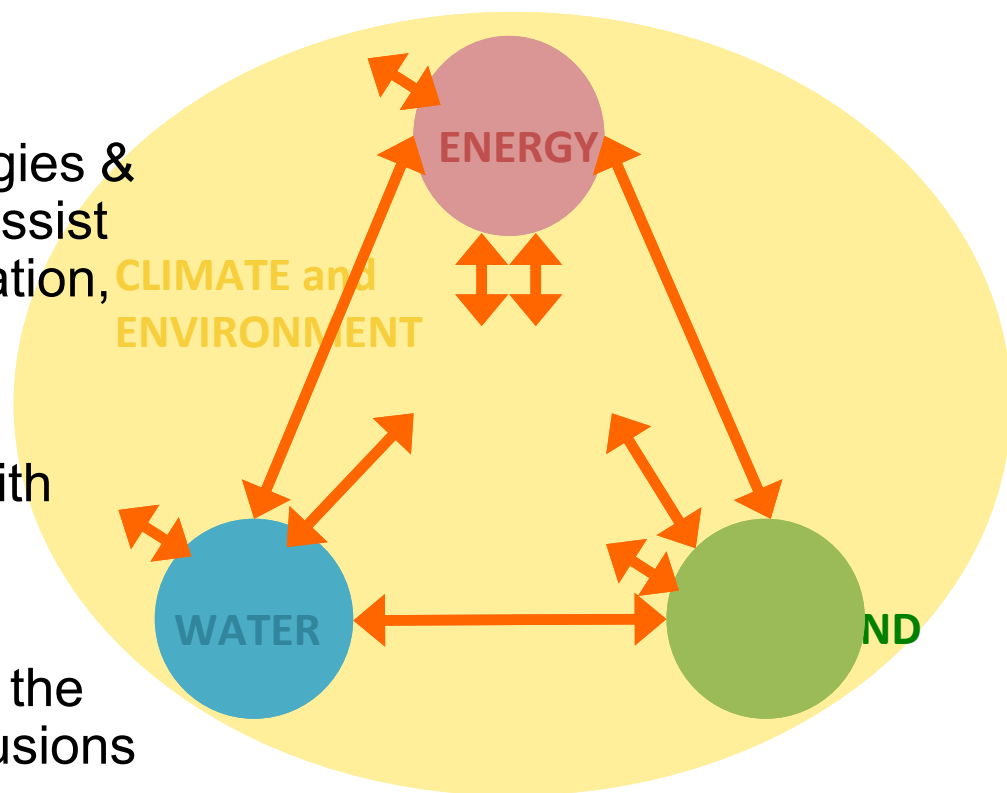
Identifying opportunities for addressing the nexus at the transboundary level

Sonja Koeppel
Environmental Affairs Officer
Water Convention secretariat
UNECE

Nexus assessments under the UNECE Water Convention: the framework

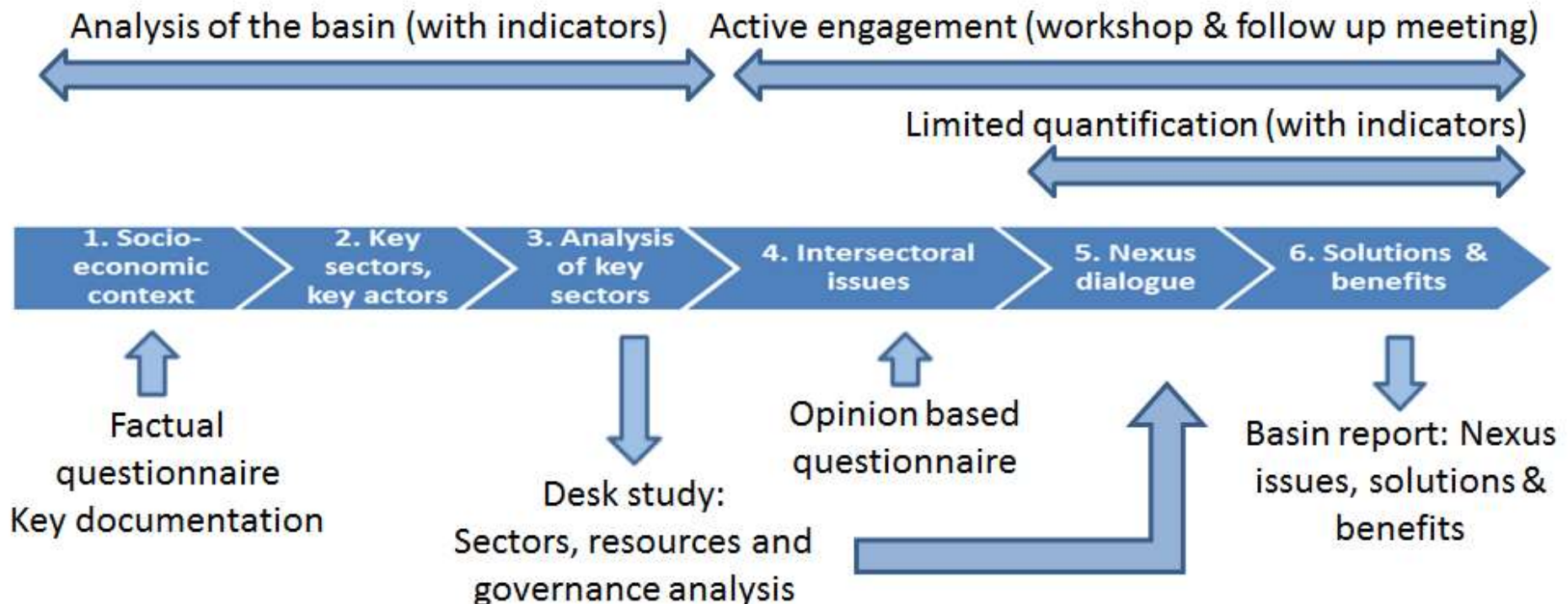


- A part of the Programme of Work 2013-2015 under the UNECE Water Convention (a global instrument), adopted by the Parties (41); continuation to 2016-2018 endorsed with more basin assessments.
- Task Force on the Water-Food-Energy-Ecosystems Nexus established to guide the work and to provide oversight;
- Aims: Foster transboundary cooperation (intersectoral synergies & measures to reduce tensions); assist countries (resource use optimization, capacity building);
- Demand-driven assessments prepared in close cooperation with and reviewed by the national administrations;
- Meeting of the Parties endorsed the methodology and general conclusions (November 2015)



Nexus assessment methodology

- Adapts to the context and the issues specific to the basin
- Application to 5 transboundary basins demonstrates value for engaging different sectors into a dialogue
- Applicable to surface water basins and aquifers



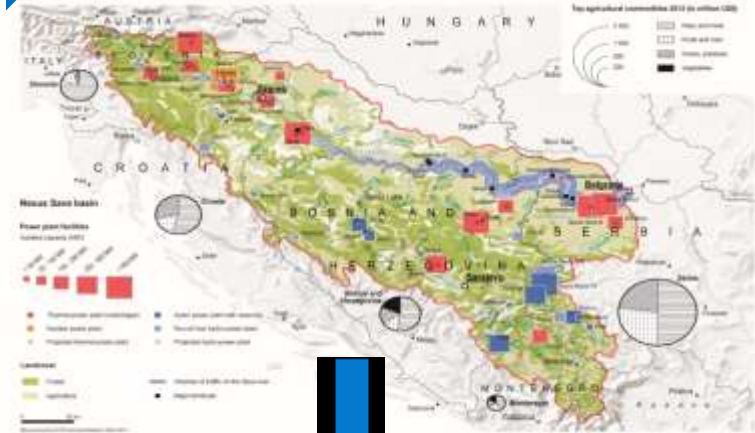
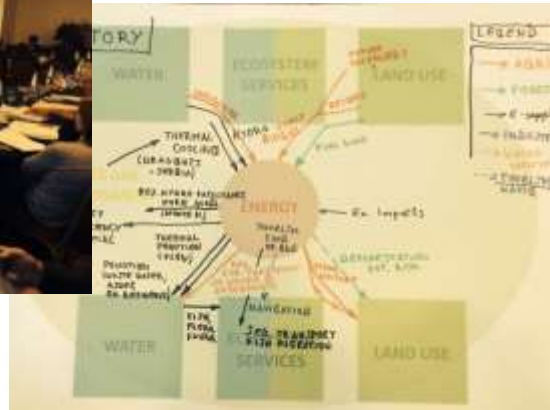
Participatory process for joint identification of issues and dialogue informed by analysis



Workshop



General basin diagnostic

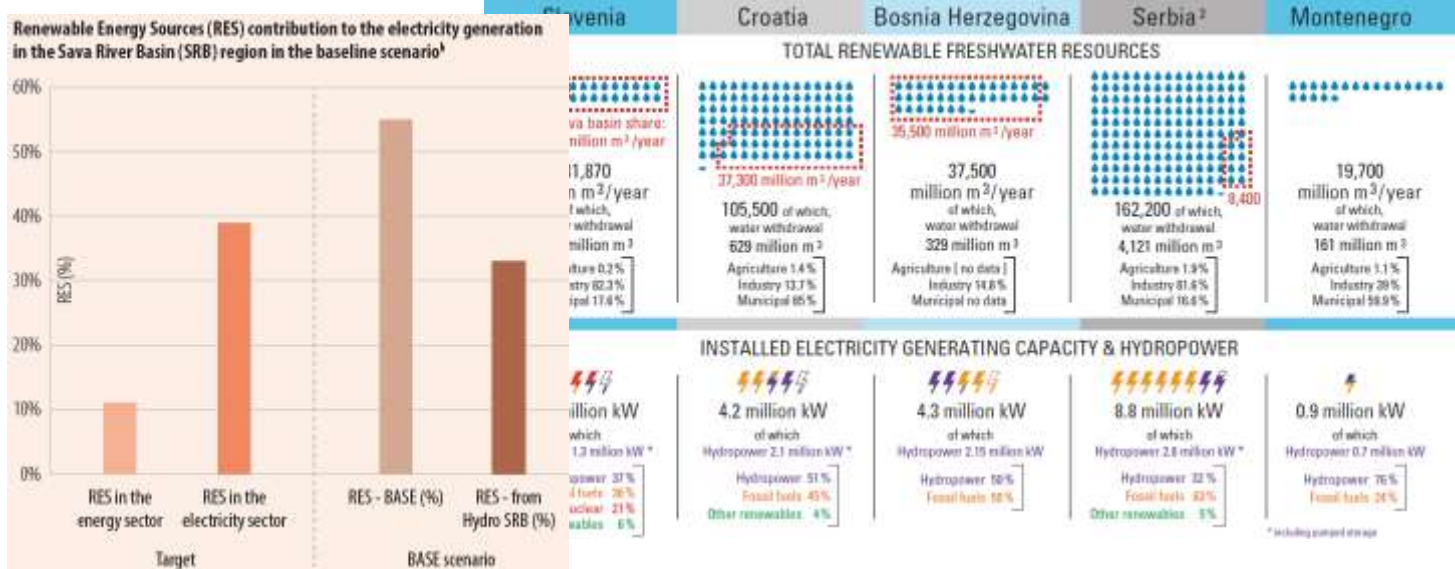


Conclusions & Quantification of selected priority issues



Indicator-based analysis

dissemination



Main nexus interlinkages & opportunities

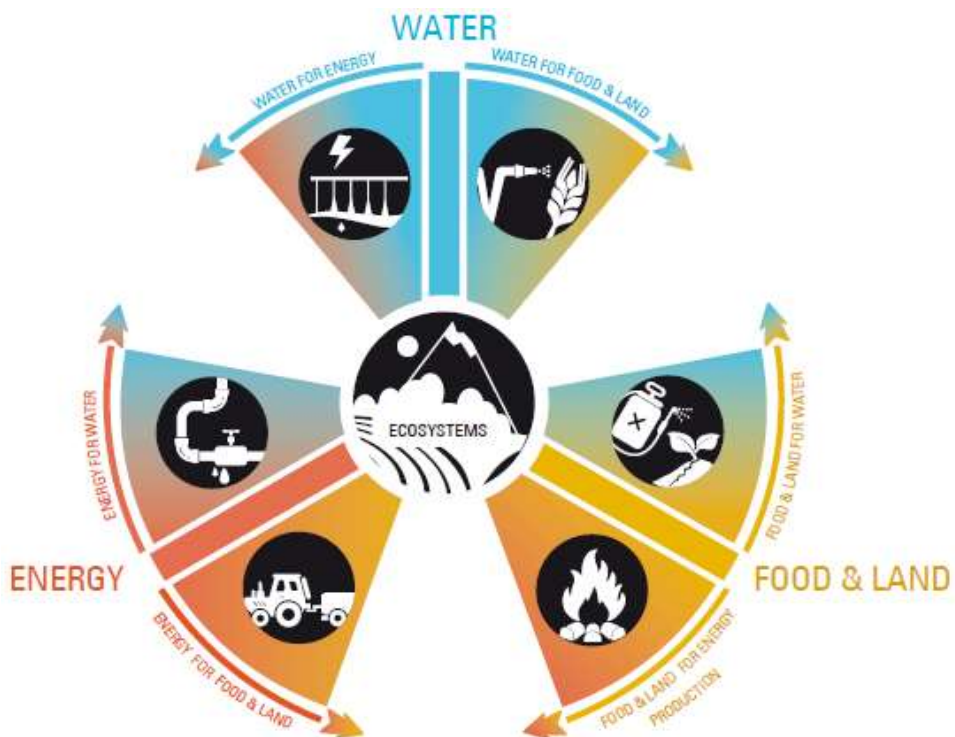


Area/ aspect	Alazani/Ganykh	Sava	Syr Darya
Main nexus interlinkages	Water-energy (hydropower), land-energy-water (biomass use, erosion/ sedimentation, hydrological flow)	Water-energy (hydropower); land-water (sediment management)	Water-land-ecosystems (irrigation, salinization), water-energy (hydropower), land-ecosystems
Main nexus opportunities	Facilitate access to modern energy sources and energy trade; minimize impacts from new hydropower development; catchment management to control erosion	Develop hydropower sustainably and integrate other renewable energies	Promote restoring and vitalizing energy market, develop the currently minimal trade in agricultural products; improve efficiency in energy generation, transmission and use; improve efficiency in water use (esp. in agriculture)

Main categories of solutions

The Water Convention’s nexus approach — non-prescriptive, inclusive and indicative — provides a good basis for identification of cooperation opportunities

- **Institutions** (intersectoral, multiple level governance, engaging resource users, responsibilities etc.)
- **Information** (multi-sector information to support policy, assessing impacts across sectors, guidelines etc.)
- **Instruments** (economic instruments, SEA etc.)
- **Infrastructure** (built and natural – investments, operation, multiple use designs etc.)
- **International coordination and cooperation** (sharing information, plans, good practices etc.)



Reflections related to institutional solutions



- Strengthening the institutional capacity, **building on existing structures** by their further development and broadening the scope of work can be recommended as a first step
- **Coordination** between regional economic organisations, basin organisations, power pools is important
- **Appropriately broad representation of sectors** in joint bodies; broadening the mandate gradually reflecting uses & pressures
- Many **river basin organizations** and other joint bodies already have a **multisectoral scope**: can function as effective platforms for a dialogue, negotiation and agreeing about actions
- Formal structures and processes facilitate but do not guarantee coordination and consultation planning. The political will is of key importance
- Appropriate mechanisms for **enabling participation** of different stakeholders and the public and for communication strengthen decision-making

Some conclusions: moving on from the nexus assessment



- **Integration** is challenging: Essential that intersectoral coordination and consultation, consideration of different interests and integrated planning are happening. The best options vary and applying the nexus approach should **build on the existing** — e.g. multisector structures, intersectoral processes (SEA etc.), review policy and economic instruments, consultation on and coordination of investments ...
- Achieving the **Sustainable Development Goals** (food security, water, energy etc.) will require taking into account intersector effects
- The Water Convention's nexus approach can provide for a **broadening or restarting a dialogue**
- Building on the intersectoral-transboundary **dialogue's findings**: **Quantification** of selected, jointly identified trade-offs and benefits to inform negotiation, cooperation, policy development. Prerequisite: **Adequate data** for meaningful analyses, fit-for-purpose support tools
- Result of the assessment may be controversial to a sector or a country; the process design and **institutional framework important** to ensure acceptance
- The improvement opportunities are to some degree **context-specific** and the cooperation situation — trust, mandates etc. — influences what can be done. Need to **manage expectations!**

Final conclusions and contact

- New assessments now ongoing for Drina, MENA and Niger to start soon
- All are invited to use the methodology presented and further develop it. Sharing of experience is welcome
- UNECE invites to the global nexus stock-taking workshop (Geneva, 6-8 December 2016, tbc) in cooperation with GEF iw:learn, Finland, Switzerland, Germany, IUCN, GWP and many other partners
- Activities foreseen under GEF iw:learn 4
- Concerted effort needed to reach out to other sectors: e.g. committee on Sustainable Energy, energy forum in Baku will discuss nexus
 - **More information:** <http://unece.org/env/water>
 - <http://www.unece.org/env/water/nexus.html>
 - Sonja.Koeppel@unece.org
 - Annukka.Lipponen@unece.org