



Presentation from  
**2016 World Water  
Week in Stockholm**

[www.worldwaterweek.org](http://www.worldwaterweek.org)

© The authors, all rights reserved

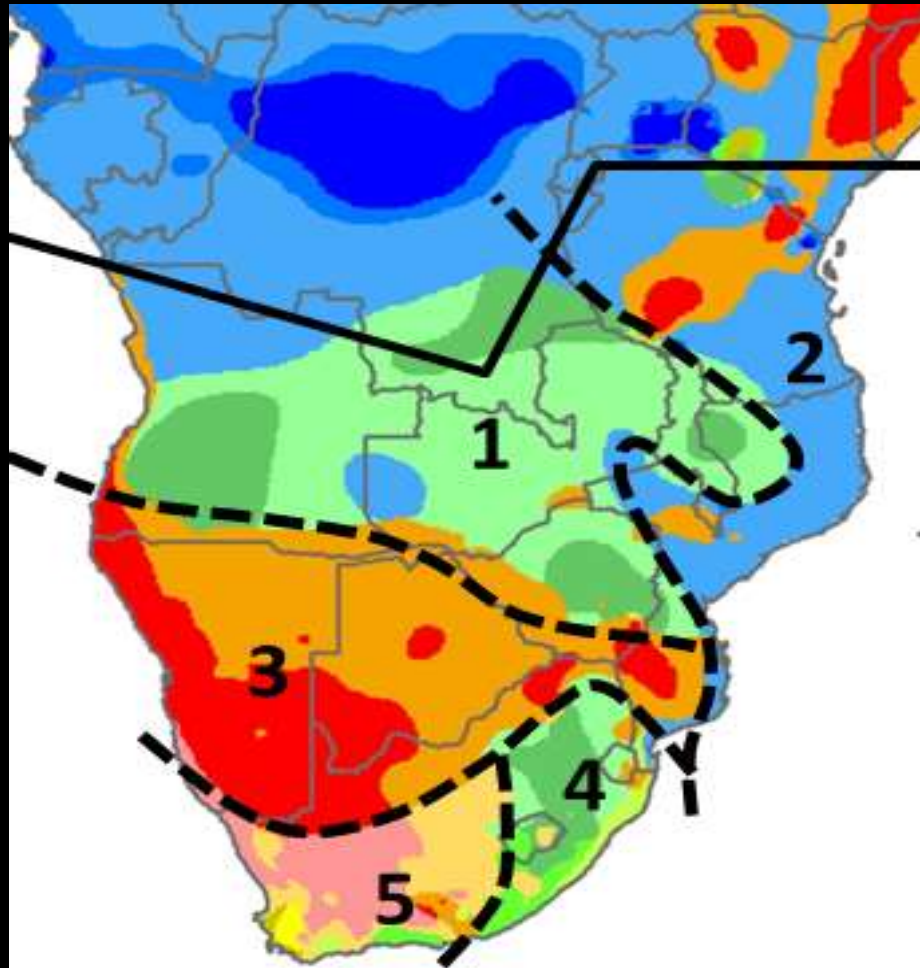


# Linking climate resilient infrastructure development, transboundary cooperation and financing in the SADC region

Dr Charles E Reeve  
Technical Director  
Climate Resilient Infrastructure Development Facility  
(CRIDF)



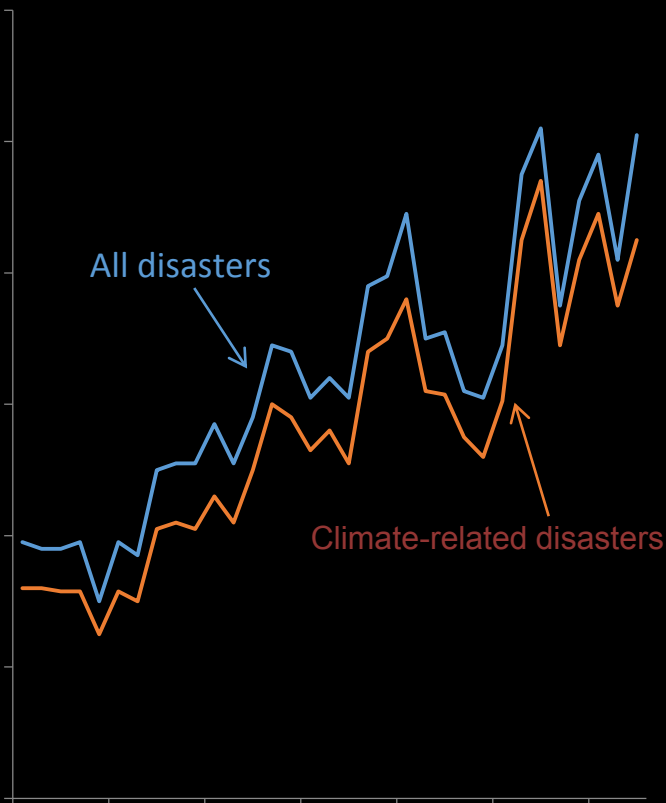
# Southern Africa climate change zone map



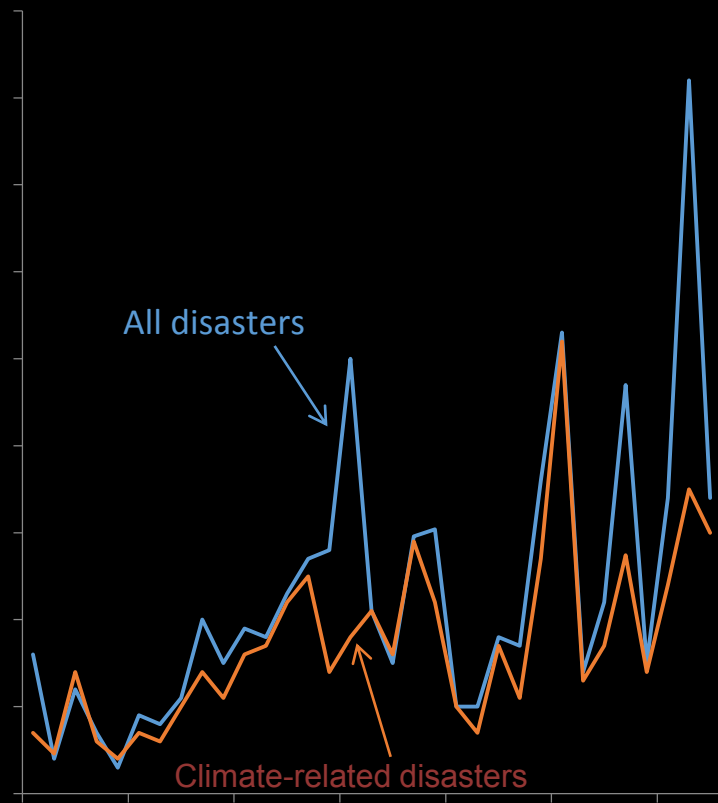


# The costs of extreme weather are stunning and growing

Number of disasters worldwide  
(1980 – 2012)

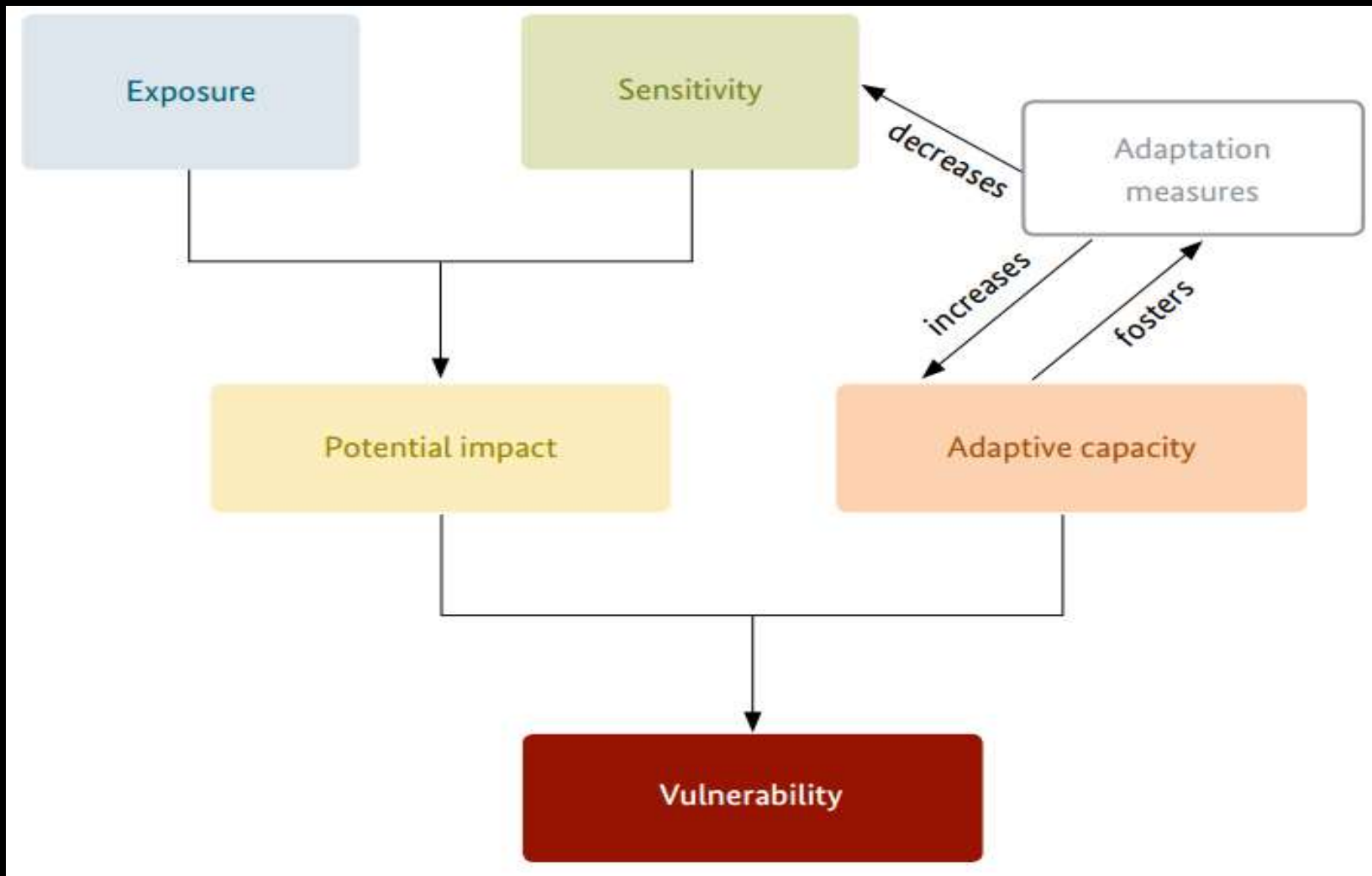


Disaster-related losses  
(US\$ billion, 2012 values)



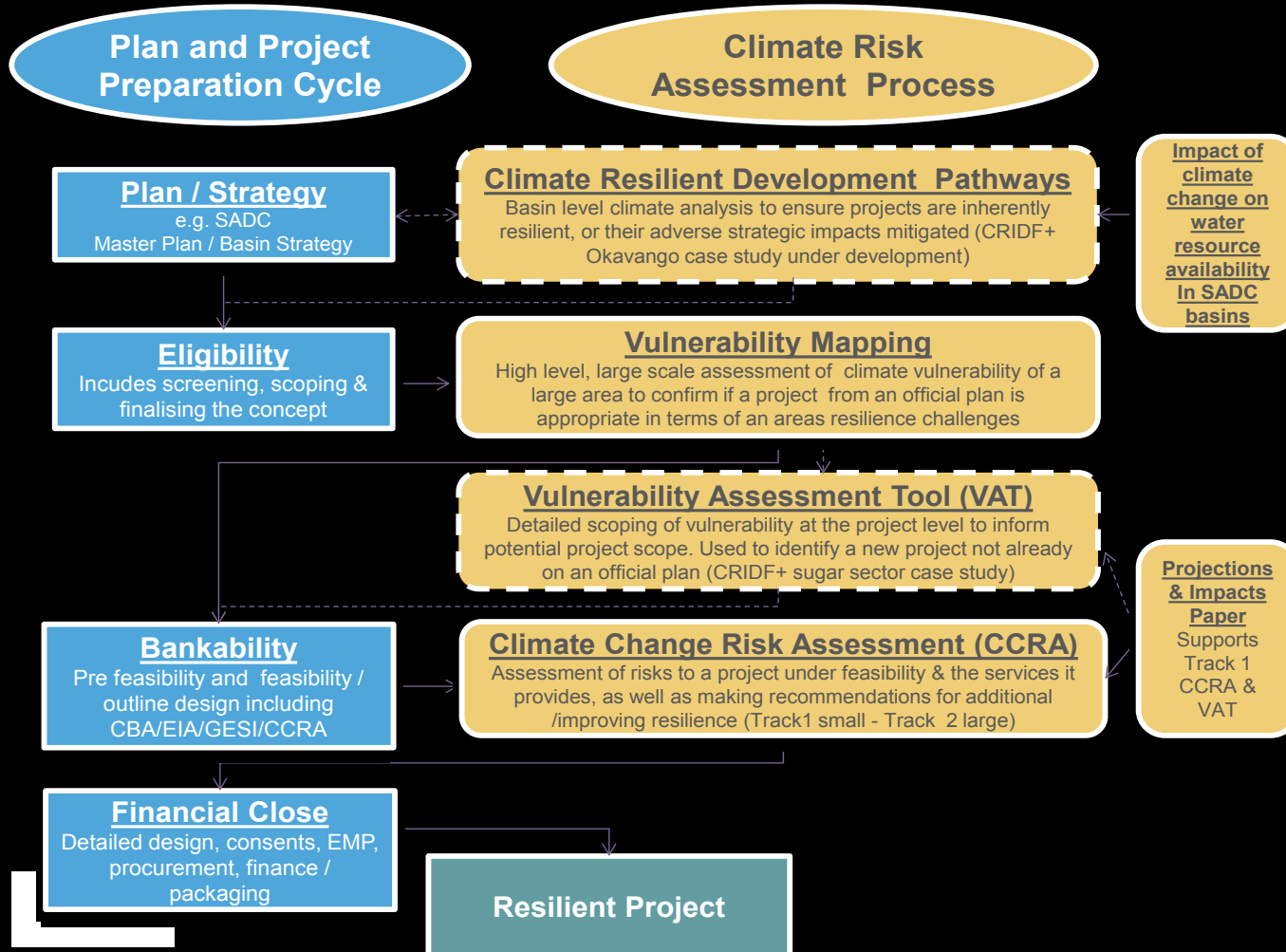


# Climate vulnerability





# Mainstreaming climate change considerations into infrastructure planning





# The GCF Opportunity



**GREEN  
CLIMATE  
FUND**

- GCF has over \$2.5 bn to disburse in 2016
- Other climate finance is being re-directed to GCF
- GCF funding raising to \$100 bn per annum by 2020

- Climate Change drivers
- Non-Climate Change drivers
- Co-funding
- Holistic approach to water and food security – paradigm shift

**GCF**

To mobilize unprecedented levels of funding to invest in low-emission and climate-resilient development on our home planet