



Presentation from  
**2015 World Water  
Week in Stockholm**

[www.worldwaterweek.org](http://www.worldwaterweek.org)

© The authors, all rights reserved

# WATER SERVICES TRUST FUND

## Poverty and sustainability

*Targeting rural water supply investments in Kenya*



**By**

***Ismail Shaiye***

**CEO**



***Stockholm Water Week – Sunday 23<sup>rd</sup> August 2015***

Financial support for improved access to water and sanitation

Water Services Trust Fund - PO Box 49699-00100, Nairobi - 1st Flr, CIC Plaza, Mara Rd  
Tel: 2720696 / 2729017-9 Email: info@wstfkenya.org www.wstfkenya.org

# Presentation Outline

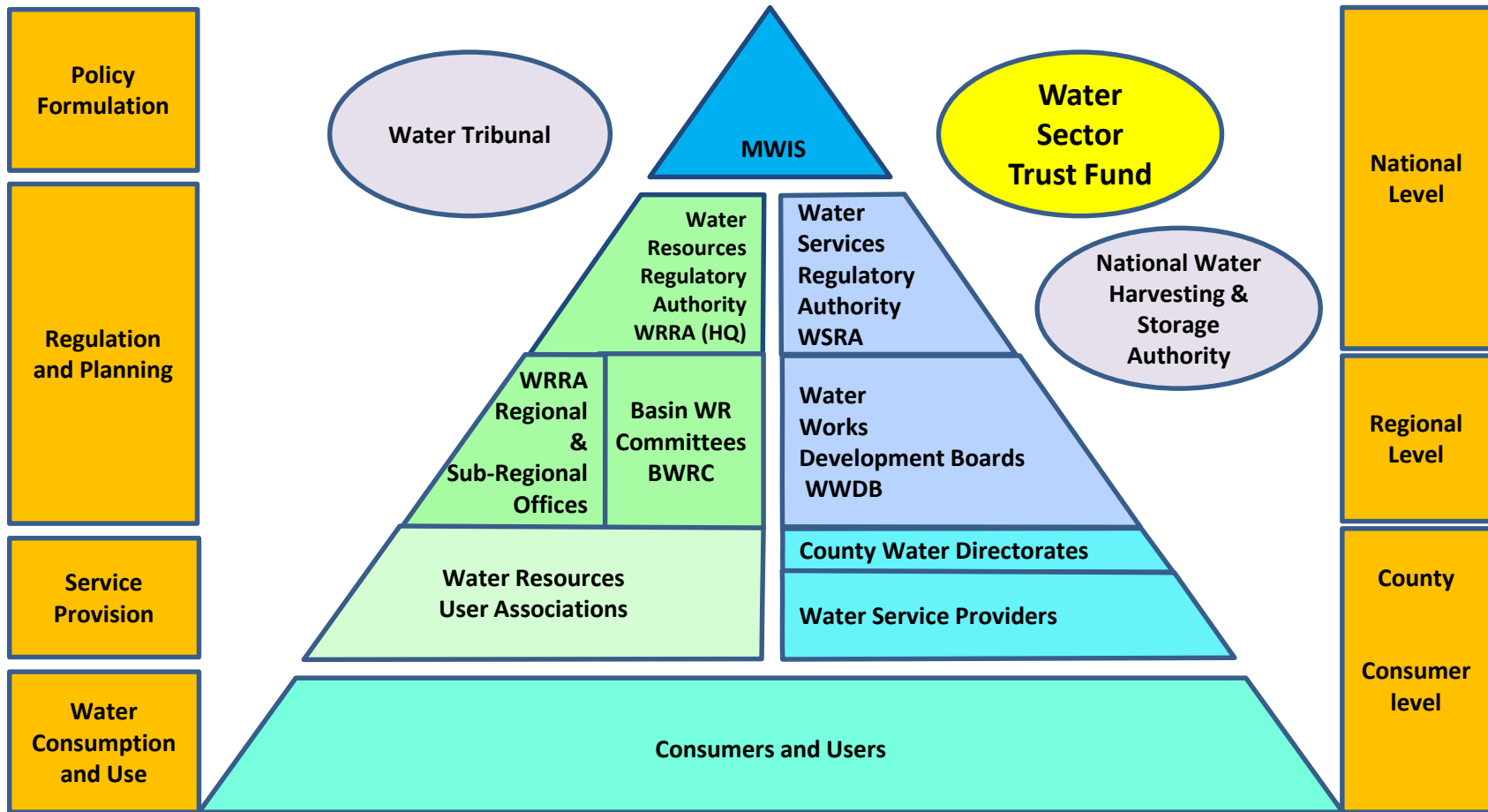
- Introduction to the Kenyan Water Sector in transition
- The WSTF and its role
- The challenge of sustaining rural water service provision
- Our experience and lessons learnt in the revision of our strategy to address this challenge
- Reflect upon the consequences of our new approach in targeting investments



Financial support for improved access to water and sanitation

Water Services Trust Fund - PO Box 49699-00100, Nairobi - 1st Flr, CIC Plaza, Mara Rd  
Tel: 2720696 / 2729017-9 Email: [info@wstfkenya.org](mailto:info@wstfkenya.org) [www.wstfkenya.org](http://www.wstfkenya.org)

# Proposed Water Sector Institutional Framework, Water Bill 2014

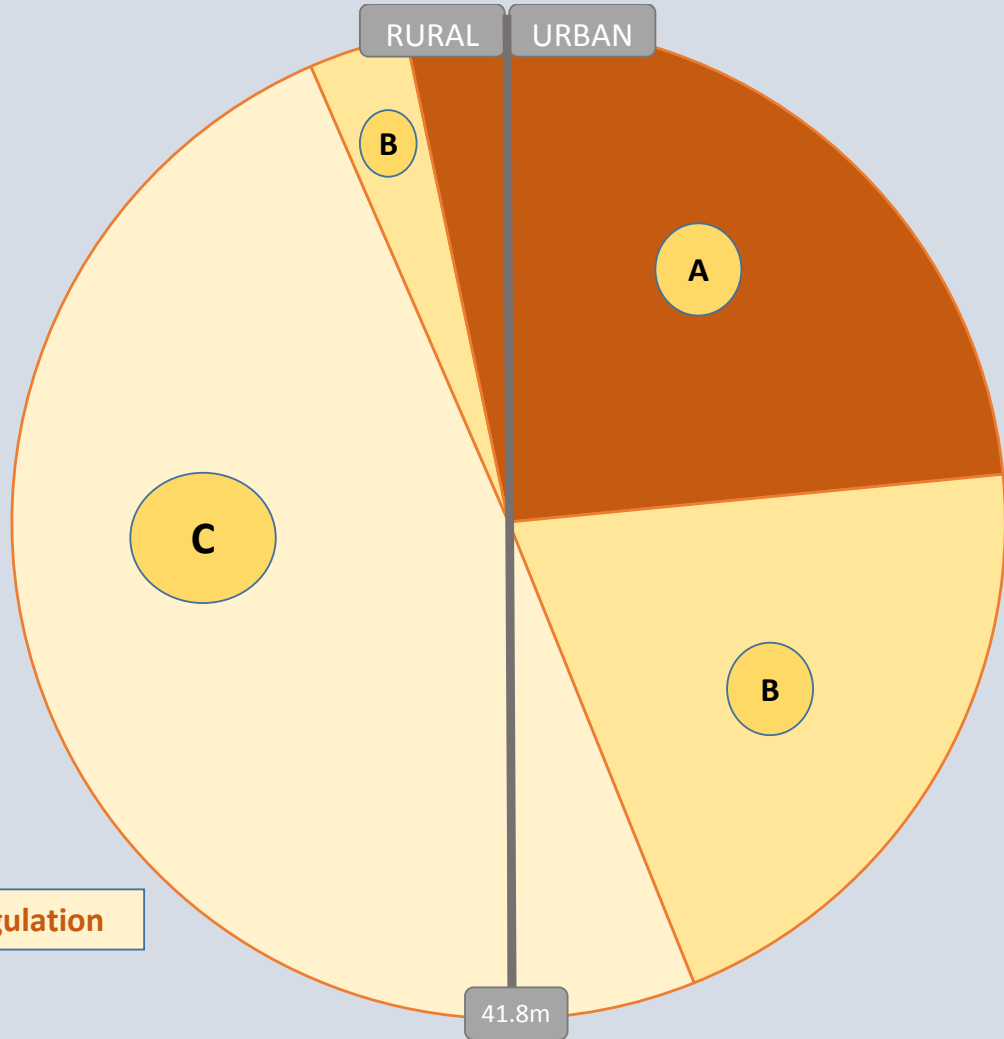


Financial support for improved access to water and sanitation

Water Services Trust Fund - PO Box 49699-00100, Nairobi - 1st Flr, CIC Plaza, Mara Rd  
Tel: 2720696 / 2729017-9 Email: info@wstfkenya.org www.wstfkenya.org

## REGULATION COVERAGE OF WATER SERVICES 2014

- A** Served within regulatory framework  
11.2m ... (27%)
- B** **Not** served but within registered WSP's mandated areas  
9.9m....(23%)
- C** **Outside** any WSP mandated area  
20.7m.....(50%)



**B + C = 73% with no regulation**

Annual WSTF investment rising from 13m to 30m (Euro)



Financial support for improved access to water and sanitation

Water Services Trust Fund - PO Box 49699-00100, Nairobi - 1st Flr, CIC Plaza, Mara Rd  
Tel: 2720696 / 2729017-9 Email: info@wstfkenya.org www.wstfkenya.org

# Investing in sustainable rural water services represents our greatest challenge

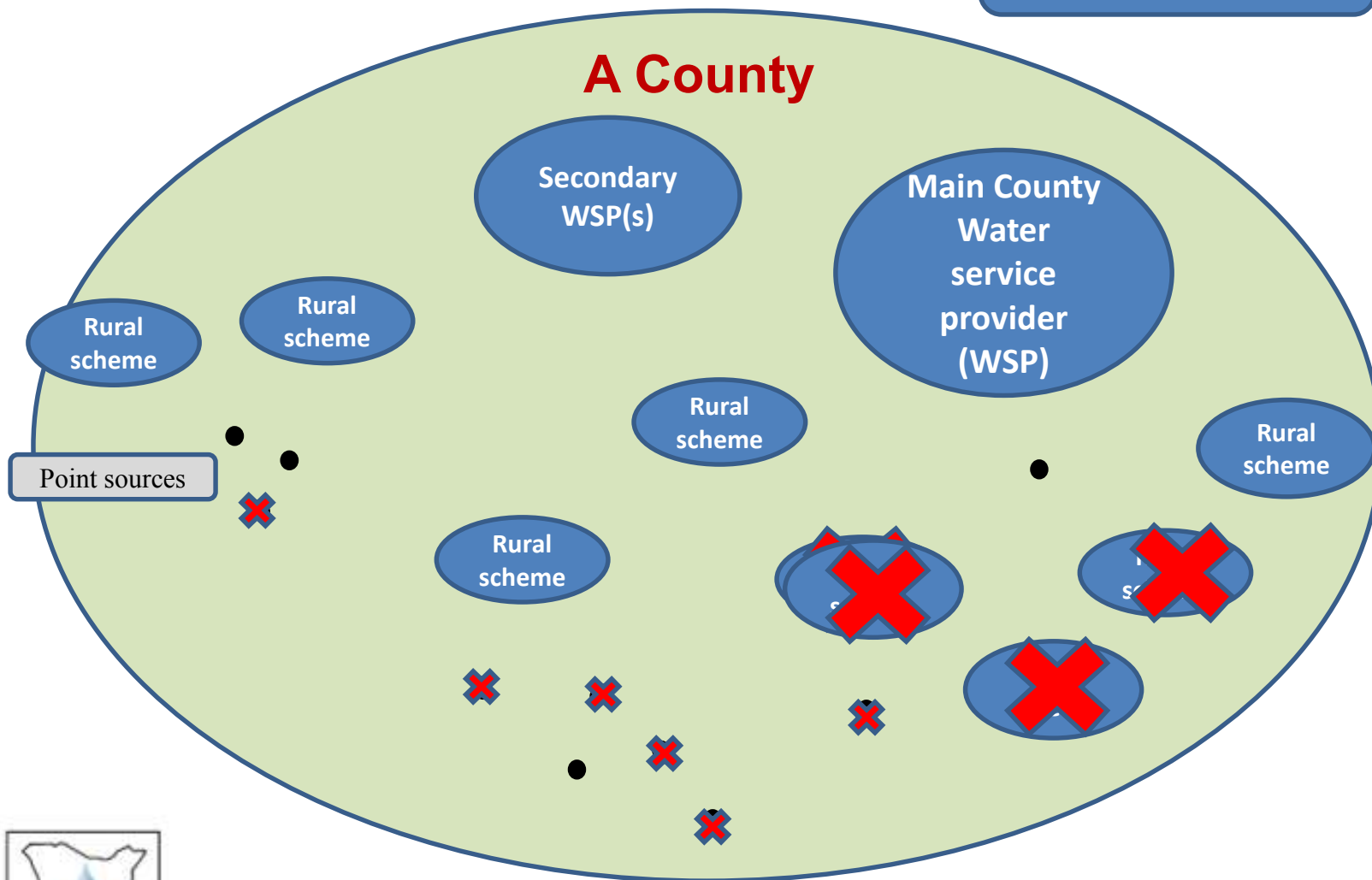


Financial support for improved access to water and sanitation

Water Services Trust Fund - PO Box 49699-00100, Nairobi - 1st Flr, CIC Plaza, Mara Rd  
Tel: 2720696 / 2729017-9 Email: info@wstfkenya.org www.wstfkenya.org

# Investing in sustainable rural water services represents our greatest challenge

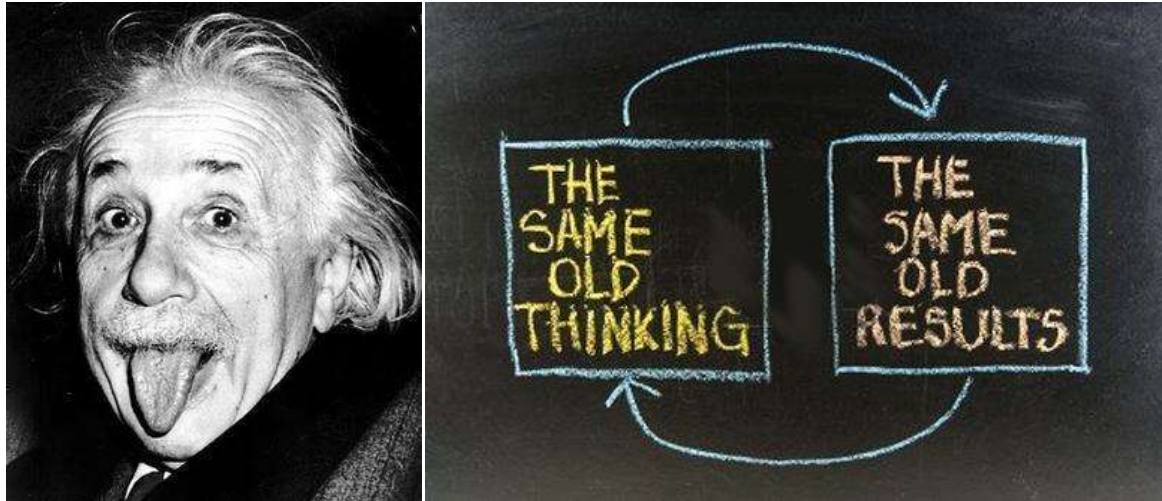
Graphic depiction of a County and the investments made



Financial support for improved access to water and sanitation

Water Services Trust Fund - PO Box 49699-00100, Nairobi - 1st Flr, CIC Plaza, Mara Rd  
Tel: 2720696 / 2729017-9 Email: info@wstfkenya.org www.wstfkenya.org

# Experience and the lessons learnt



**What to do?**



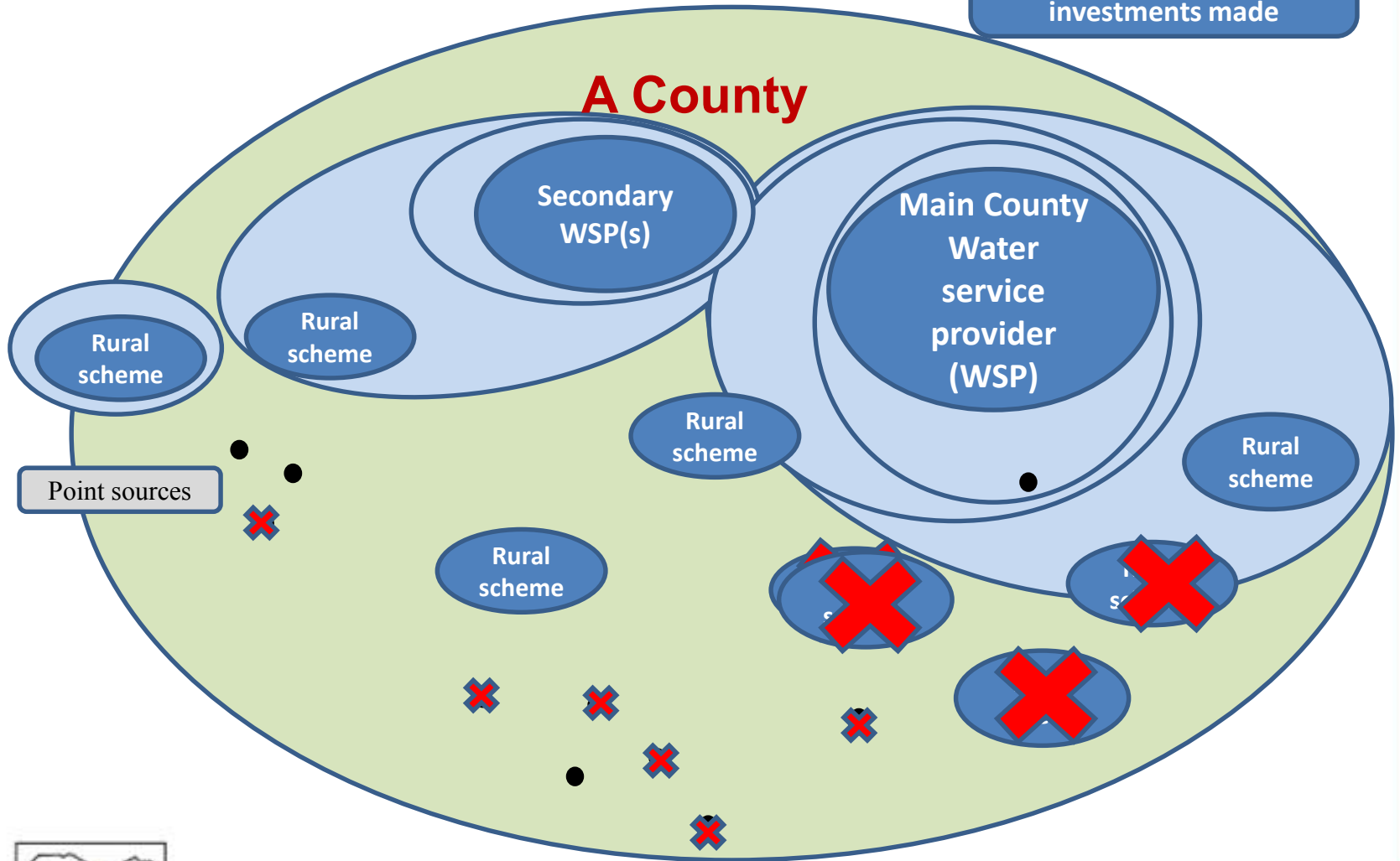
Financial support for improved access to water and sanitation

Water Services Trust Fund - PO Box 49699-00100, Nairobi - 1st Flr, CIC Plaza, Mara Rd  
Tel: 2720696 / 2729017-9 Email: info@wstfkenya.org www.wstfkenya.org



# Expanding improved water service provision to rural areas

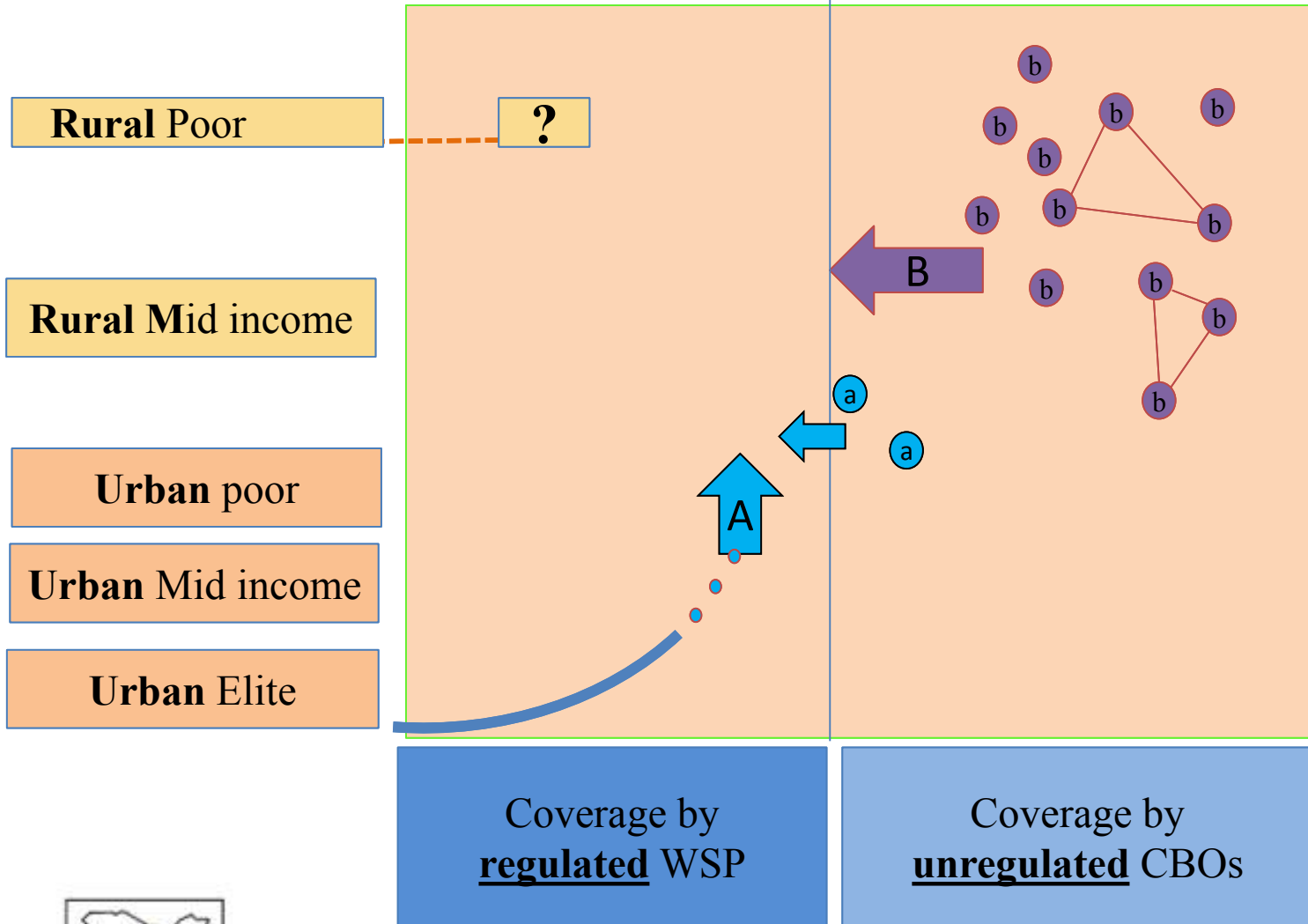
Graphic depiction of a County and the investments made



Financial support for improved access to water and sanitation

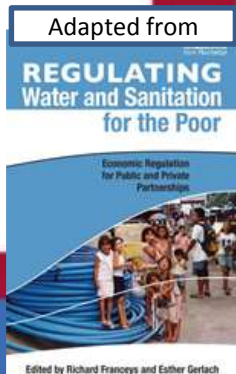
Water Services Trust Fund - PO Box 49699-00100, Nairobi - 1st Flr, CIC Plaza, Mara Rd  
Tel: 2720696 / 2729017-9 Email: info@wstfkenya.org www.wstfkenya.org

# Addressing sustainability within a robust regulatory framework



Financial support for improved access to water and sanitation

Water Services Trust Fund - PO Box 49699-00100, Nairobi - 1st Flr, CIC Plaza, Mara Rd  
Tel: 2720696 / 2729017-9 Email: info@wstfkenya.org www.wstfkenya.org



Adapted from

**REGULATING**  
Water and Sanitation  
for the Poor

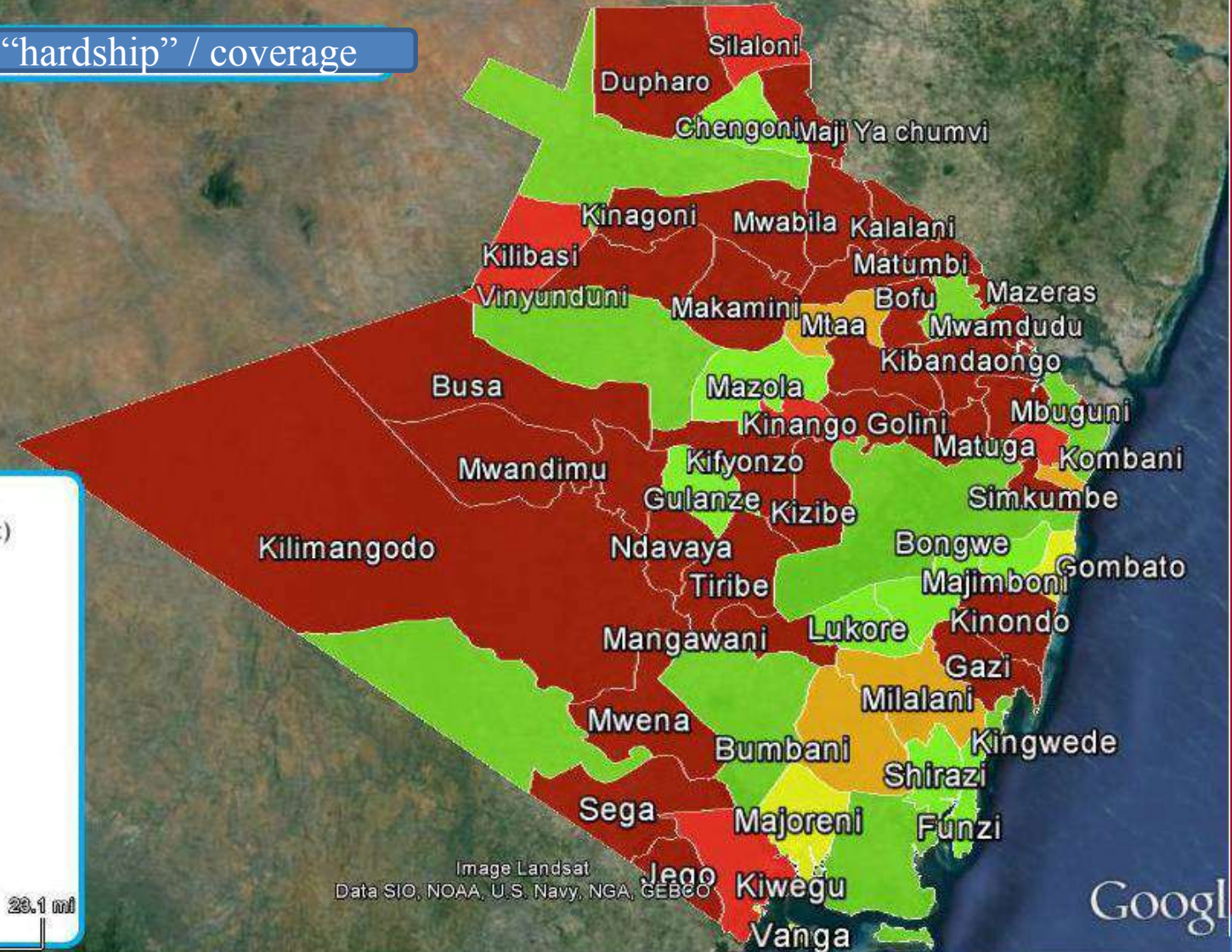
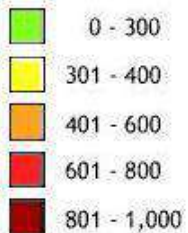
Economic Regulation  
for Public and Private  
Partnerships

Edited by Richard Francoys and Esther Gertach

# The consequences

Water access “hardship” / coverage

Water source coverage  
(people per water point)



## Conclusion

### Our future focus will be directed towards:

- Ensuring all rural investments provide sustainable access to WASH services
- Building rural utilities to be credit worthy so by providing alternative options (to donor grant funding) in their sourcing of investment capital

The result being that GOF/GOS investment in the future will represent long term VfM in the pro-poor provision of WASH services to the underserved.



Financial support for improved access to water and sanitation

Water Services Trust Fund - PO Box 49699-00100, Nairobi - 1st Flr, CIC Plaza, Mara Rd  
Tel: 2720696 / 2729017-9 Email: [info@wstfkenya.org](mailto:info@wstfkenya.org) [www.wstfkenya.org](http://www.wstfkenya.org)

# WATER SERVICES TRUST FUND

## Poverty and sustainability

*Targeting rural water supply investments in Kenya*



***The end  
Thank you***



***Stockholm Water Week – Sunday 23<sup>rd</sup> August 2015***

Financial support for improved access to water and sanitation

Water Services Trust Fund – PO Box 49699-00100, Nairobi – 1st Flr, CIC Plaza, Mara Rd  
Tel: 2720696 / 2720617-9 Email: [info@wstfkenya.org](mailto:info@wstfkenya.org) [www.wstfkenya.org](http://www.wstfkenya.org)