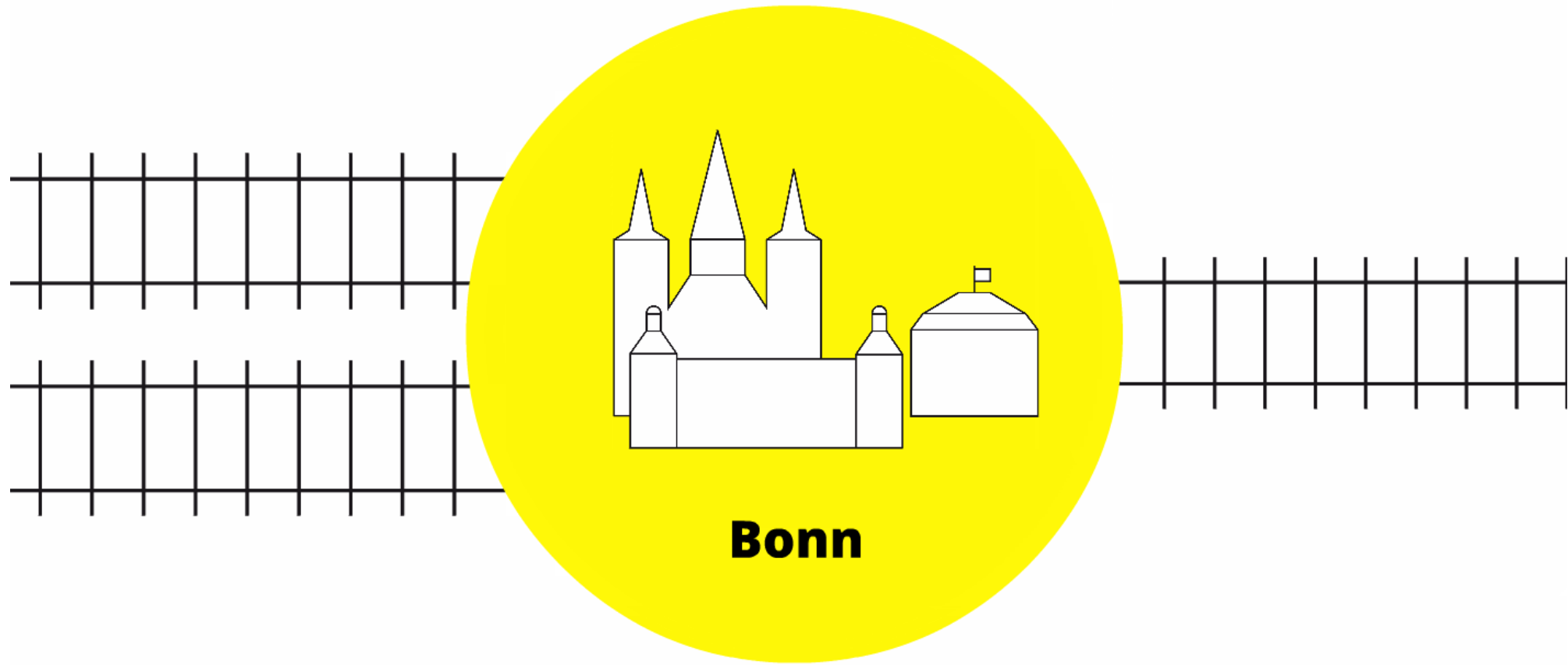


# Upscaling the WASH-Nutrition Nexus for Sustainable (Body) Growth

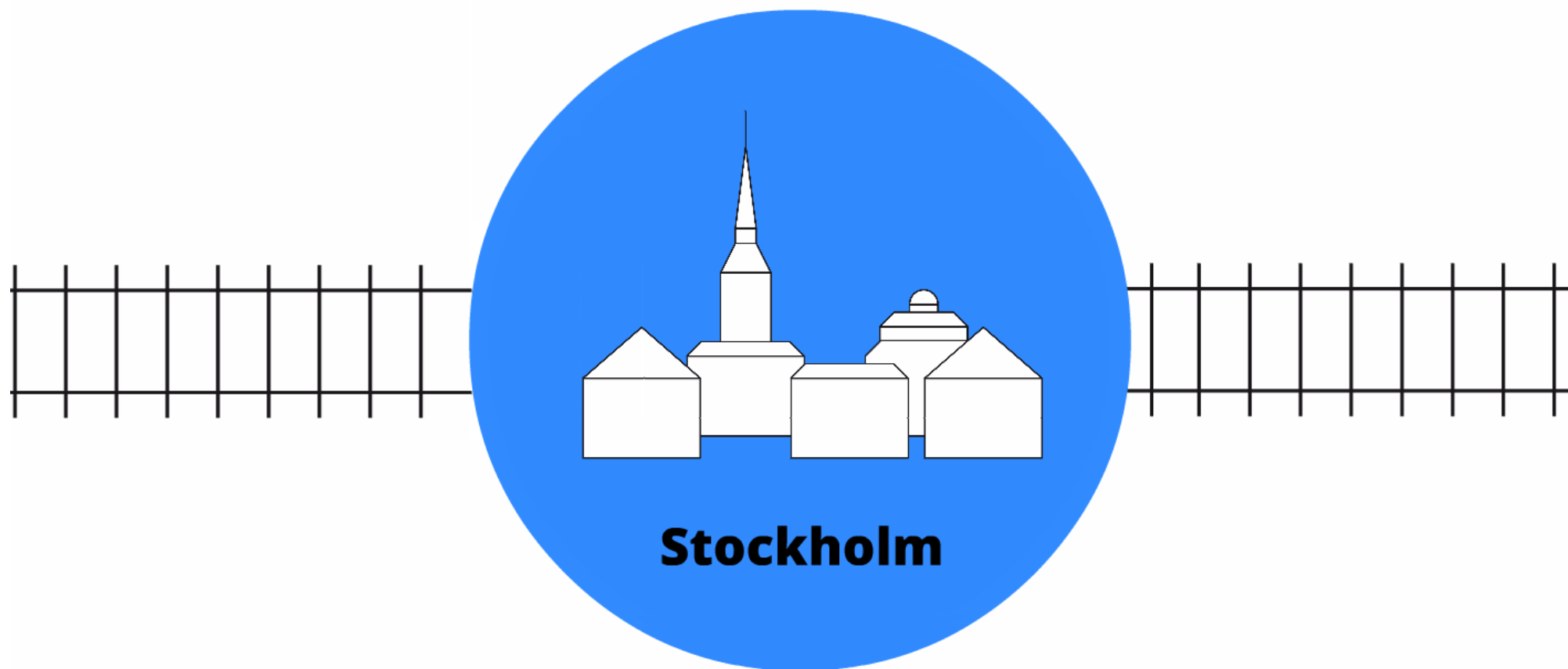


GERMAN  
**WASH**  
NETWORK

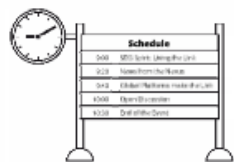
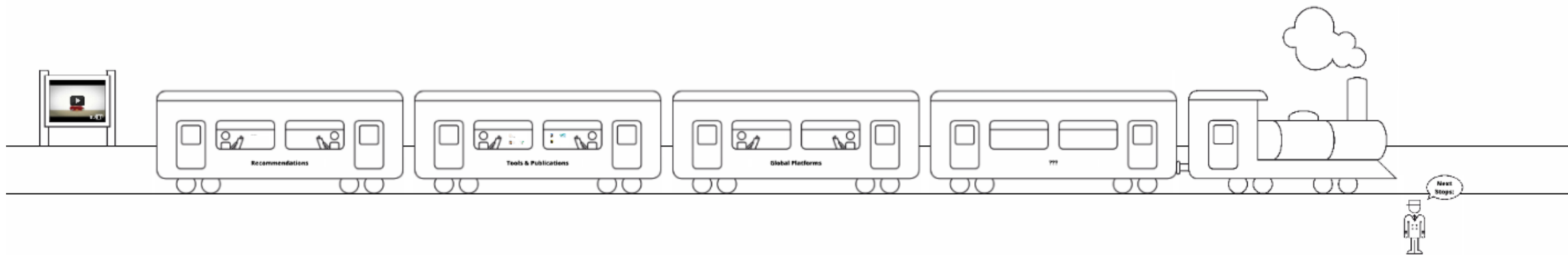


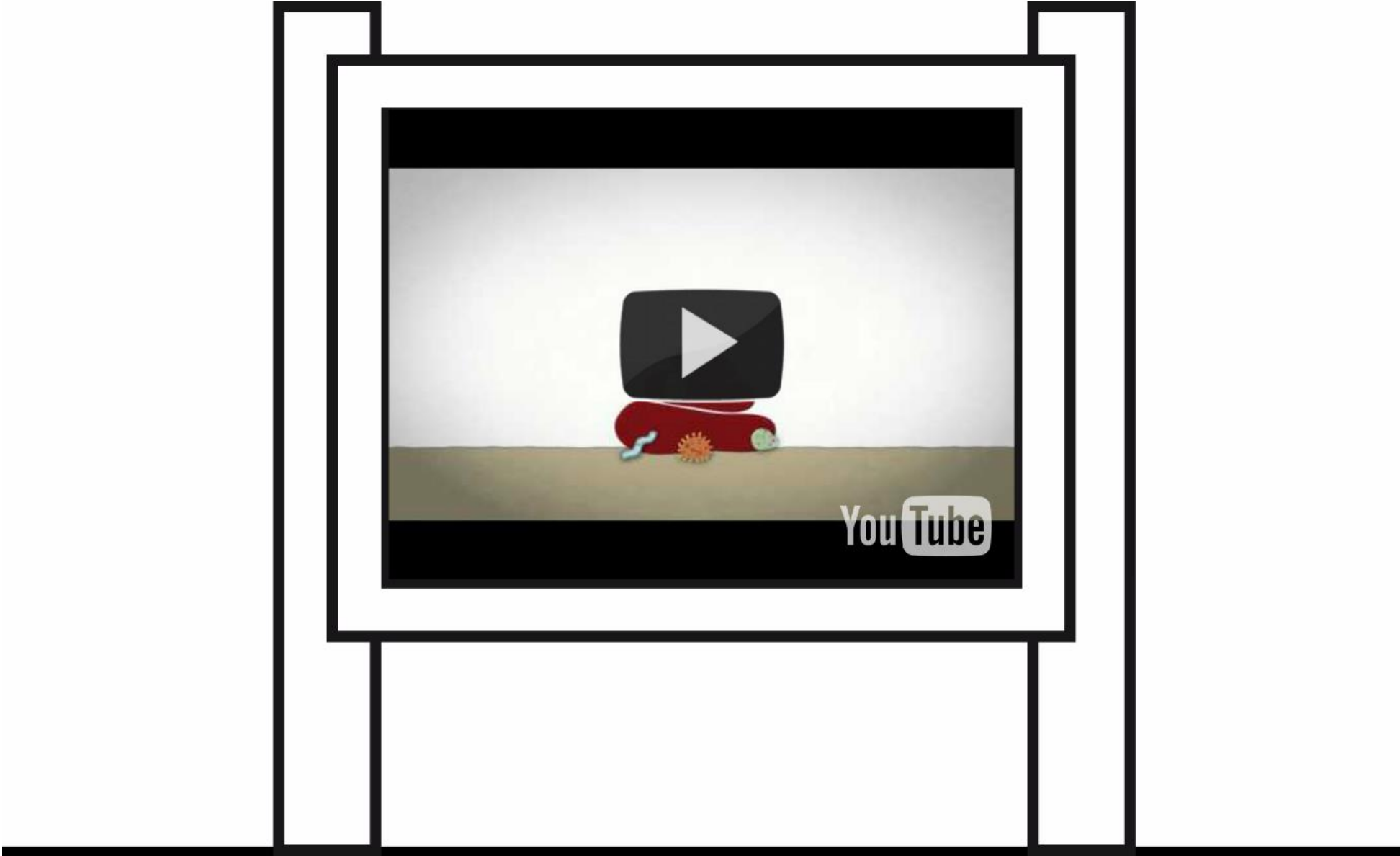


- 50:50 representation from WASH and Nutrition actors
- > 100 participants, 23 countries, 54 organisations
- Mirror sessions with key actors in similar positions



- WWW regular platform to discuss the link
- 2012 & 2015: Sessions, primarily with WASH actors
- New this year: Involving key nutrition actors





Video (Generation Nutrition): <https://www.youtube.com/watch?v=yWlr-eJ8FAs> available in English, French, Spanish, Swahili, Khmer



## **Schedule**

9:00 SDG Spirit: Living the Link

9:20 News from the Nexus

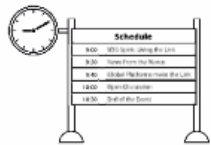
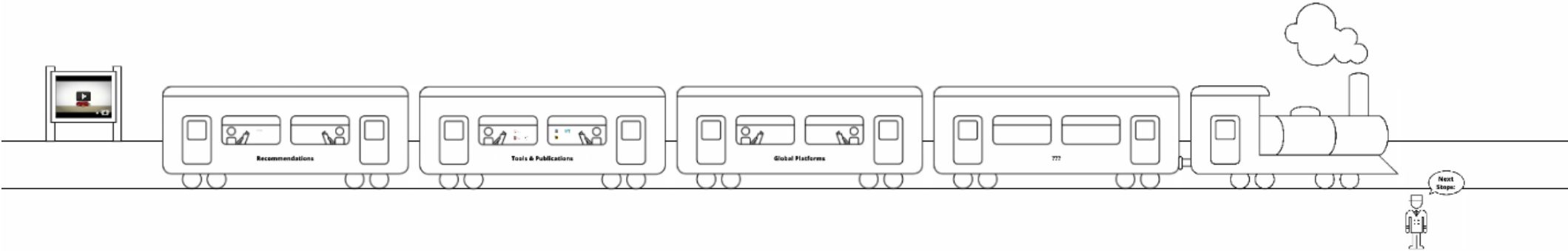
9:40 Global Platforms make the Link

10:00 Open Discussion

10:30 End of the Event

# MDGs

# SDGs





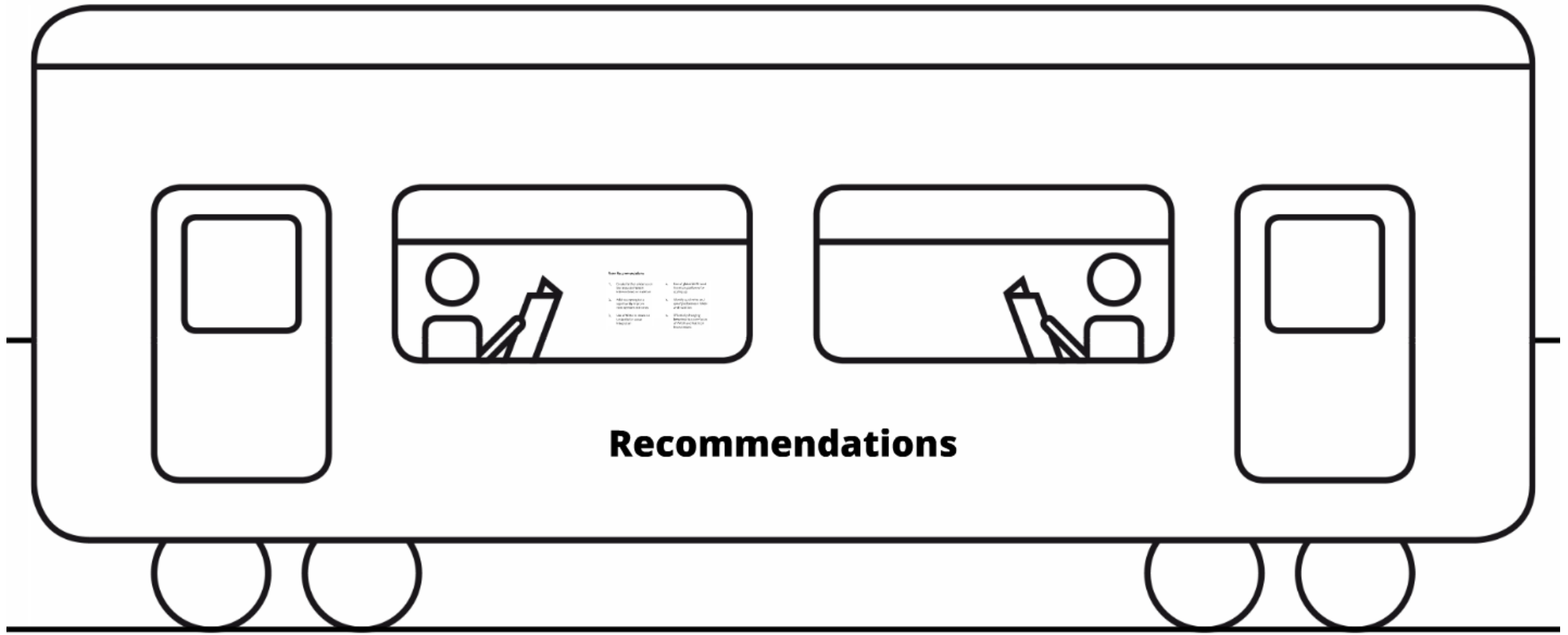


## Living the WASH-Health-Nutrition Nexus in the Spirit of the SDG Agenda

*Dr. Heike Henn*

*Federal Ministry of Economic Cooperation and Development of Germany*

- Thinking and living the SDGs - Creating synergies and quick wins in the WASH-Health-Nutrition Nexus to set an example
- The link is palpable – let´s build on what we know and move forward
- German initiative “ONE World – No Hunger” follows a nexus approach
- New partnerships for 2030 embrace complexity



## Recommendations

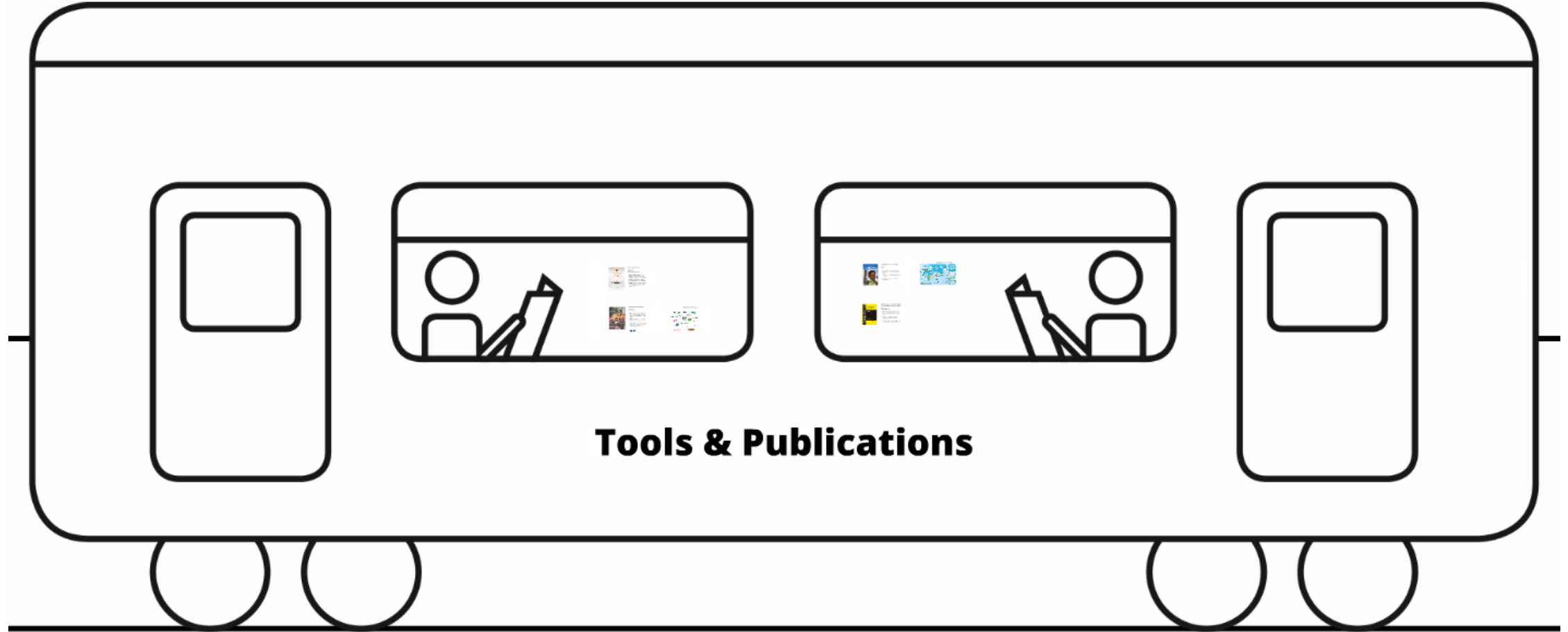
### Key Recommendations

- 1. Consider the audience and the purpose of the communication.
- 2. Use clear and concise language.
- 3. Use bullet points and numbered lists to organize information.
- 4. Use a consistent format and style.

- 5. Avoid jargon and technical terms unless necessary.
- 6. Use visual aids like charts and graphs to illustrate data.
- 7. Proofread carefully for errors.
- 8. Get feedback from others before finalizing.

## **Bonn Recommendations**

1. Create further evidence on the impact of WASH interventions on nutrition
2. Address synergies to significantly improve development outcomes
3. Use of SDGs to create an umbrella for sector integration
4. Use of global WASH and Nutrition platforms for scaling-up
5. Identify quick wins and synergies between WASH and Nutrition
6. Effectively changing behaviour is a core focus of WASH and Nutrition interventions



**Tools & Publications**



## The Global Nutrition Report

*Patrizia Fracassi*

*SUN Movement*

*GNR Independent Expert Group*

- **The Global Nutrition Report** is the only independent and comprehensive annual stocktake of the state of the world's nutrition.
- **Audience:** Policymakers in government, international organizations, and civil society
- **Purpose:** To identify successes and failures in meeting global nutrition targets, evaluate commitments, and recommend actions to accelerate progress



## WASH'Nutrition Operational Manual

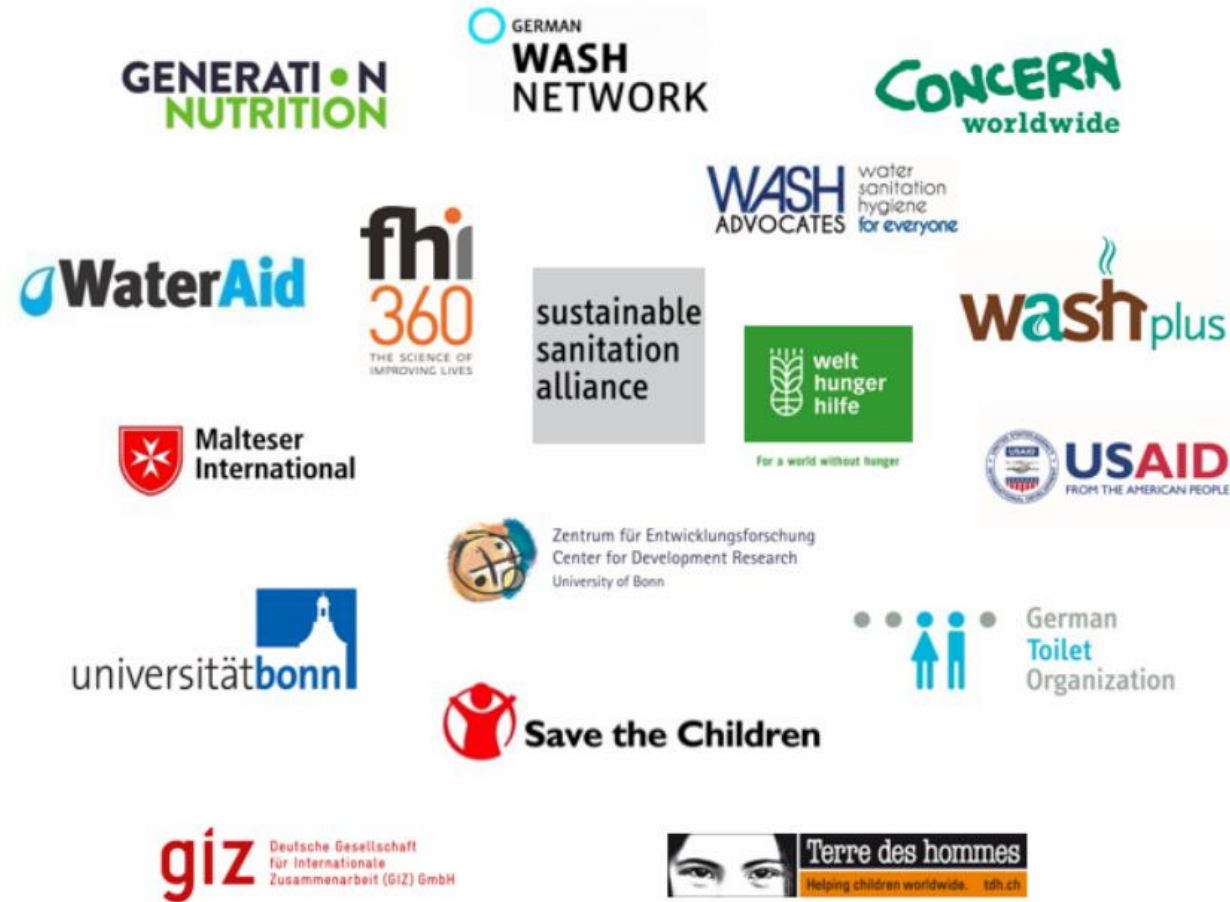
*Jean Lapègue*

*Action Contre La Faim*

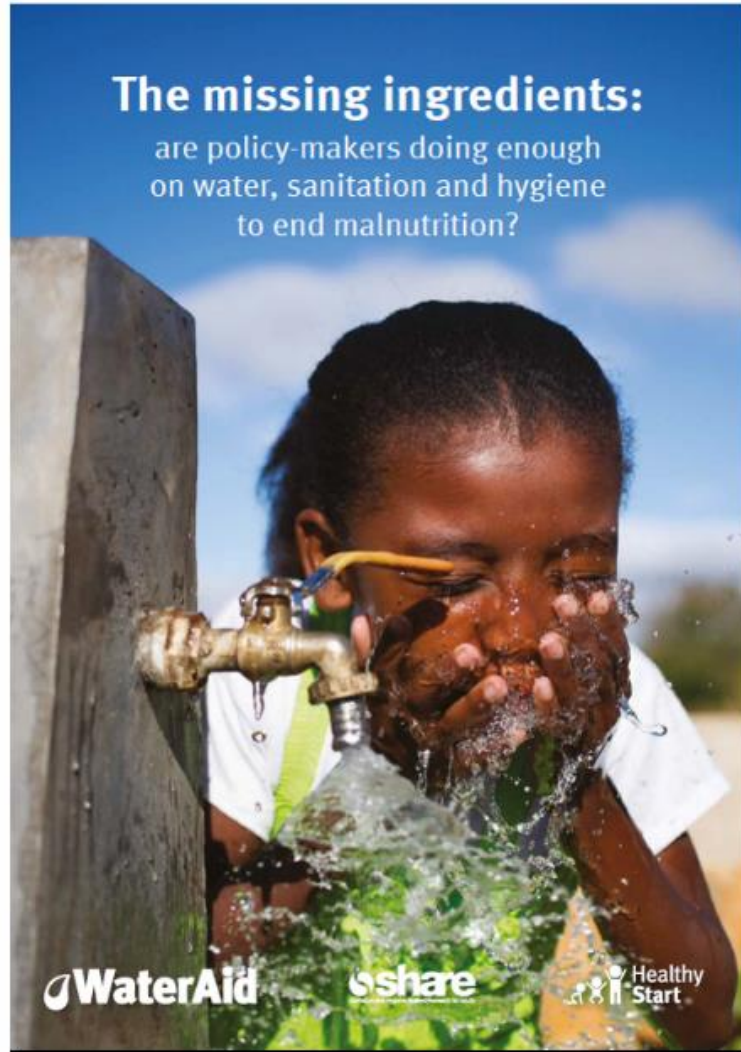
- **Why?** A coherent and coordinated multi-sectoral approach is needed to facilitate sustainable and at scale impact on under-nutrition
- **What?** A practical guidebook to increase nutritional impact through the integration of WASH and nutrition programs
- **For Whom?** For field practitioners working in humanitarian and development contexts, donors and policy makers



# WASH'Nutrition Operational Manual







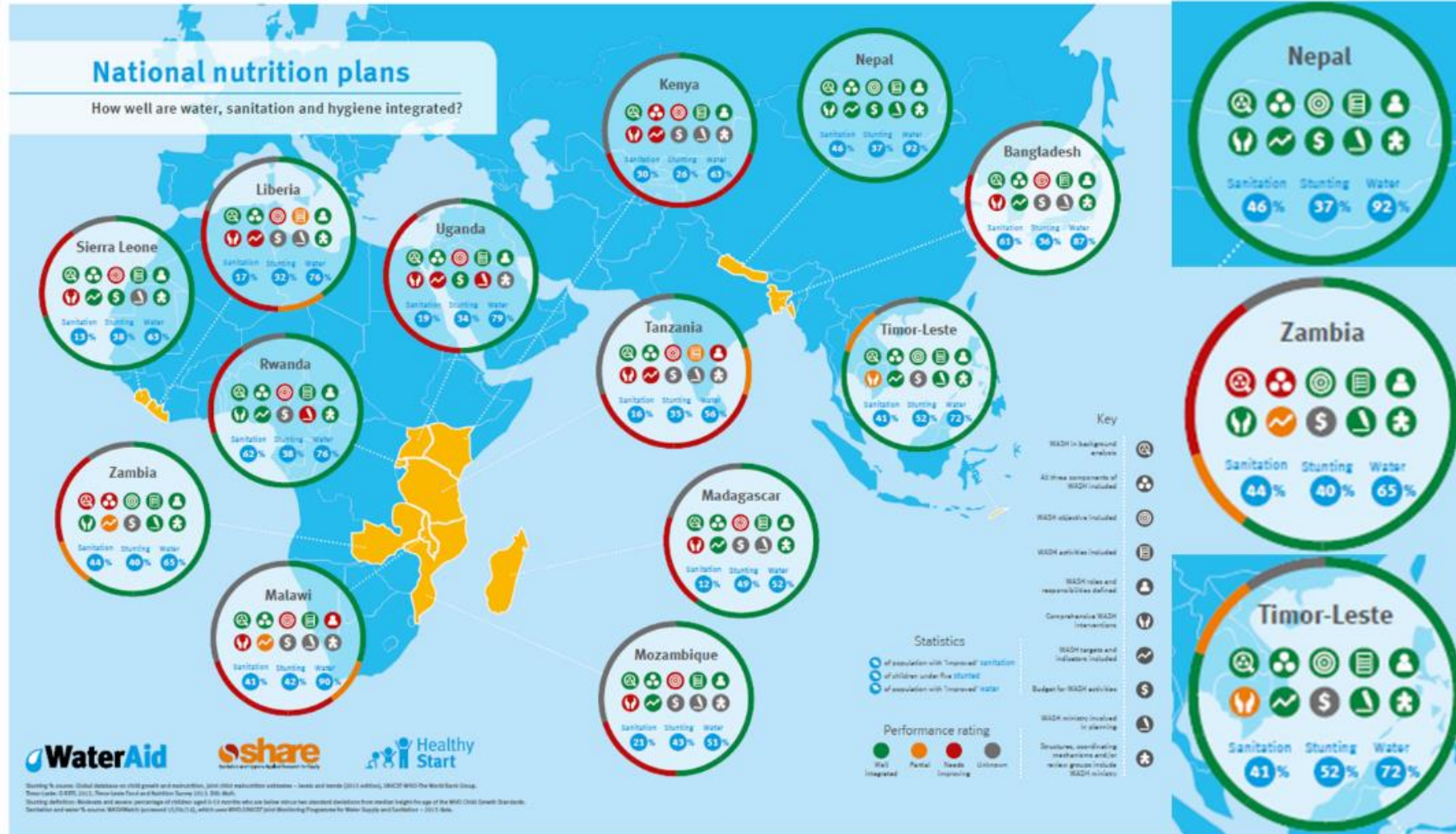
## National Nutrition & WASH Plan Analysis

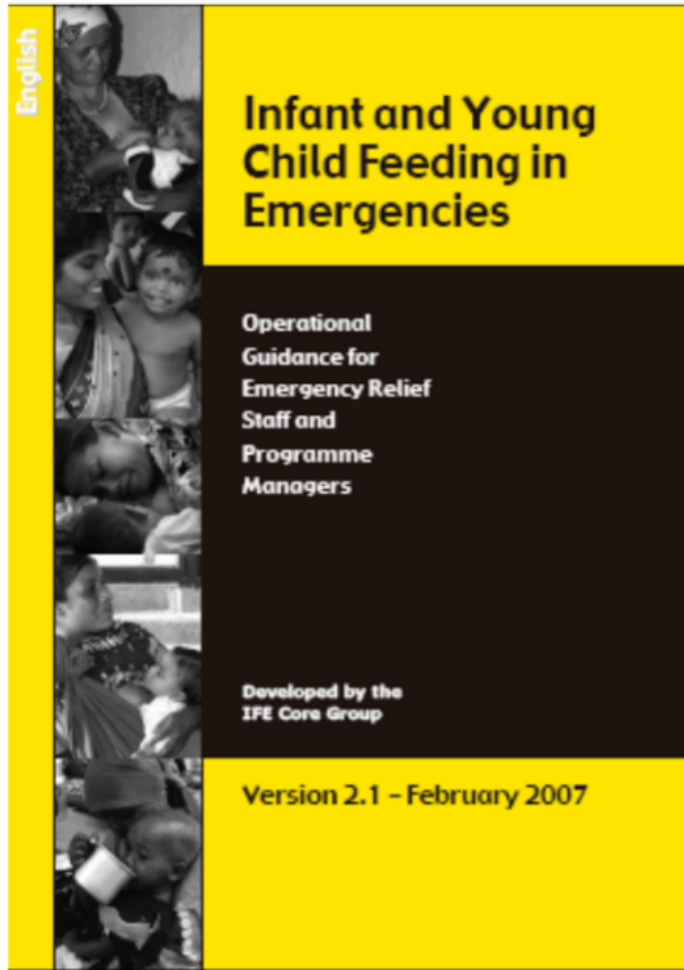
*Dan Jones*  
*WaterAid*

- Think of 'Integration' as a (context-specific) continuum
- Plan for effective integration throughout the policy cycle
- Words must become action by WASH and Nutrition actors



# National Nutrition & WASH Plan Analysis

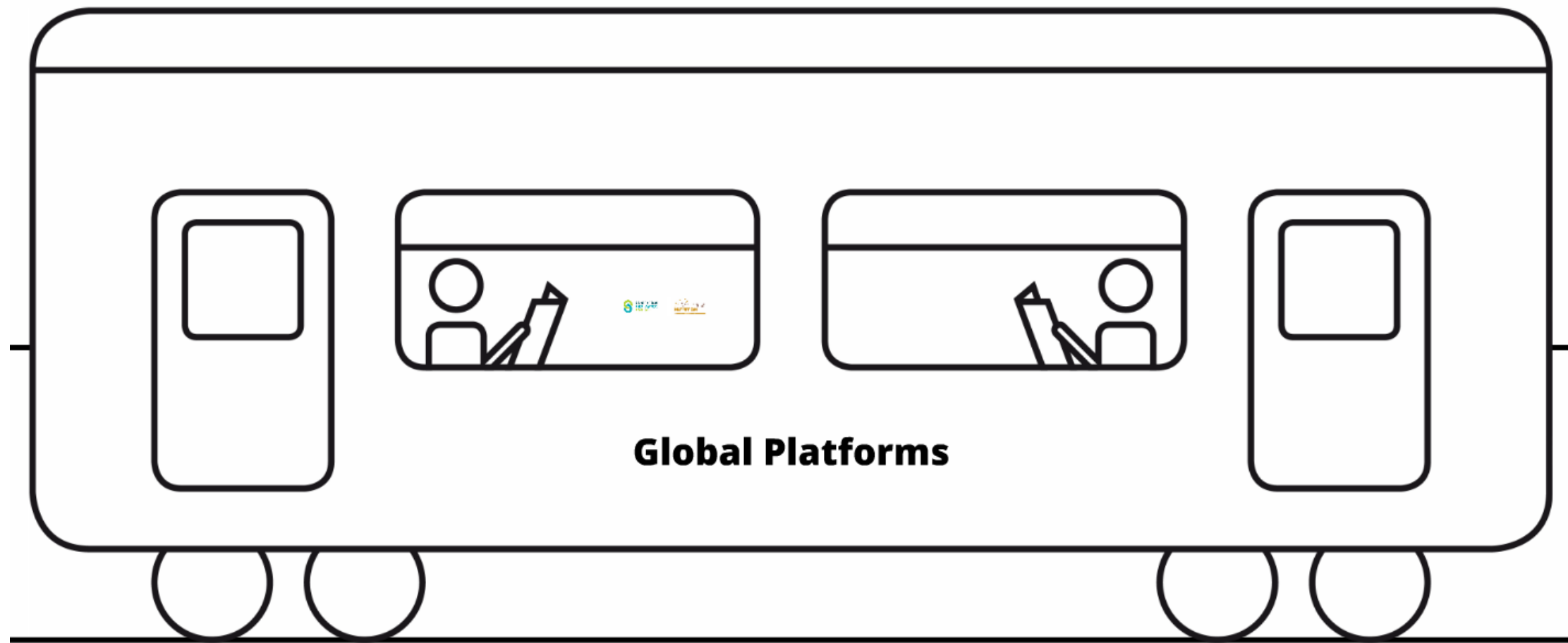




## WASH considerations for the update of the Infant Feeding in Emergencies Operational Guidance

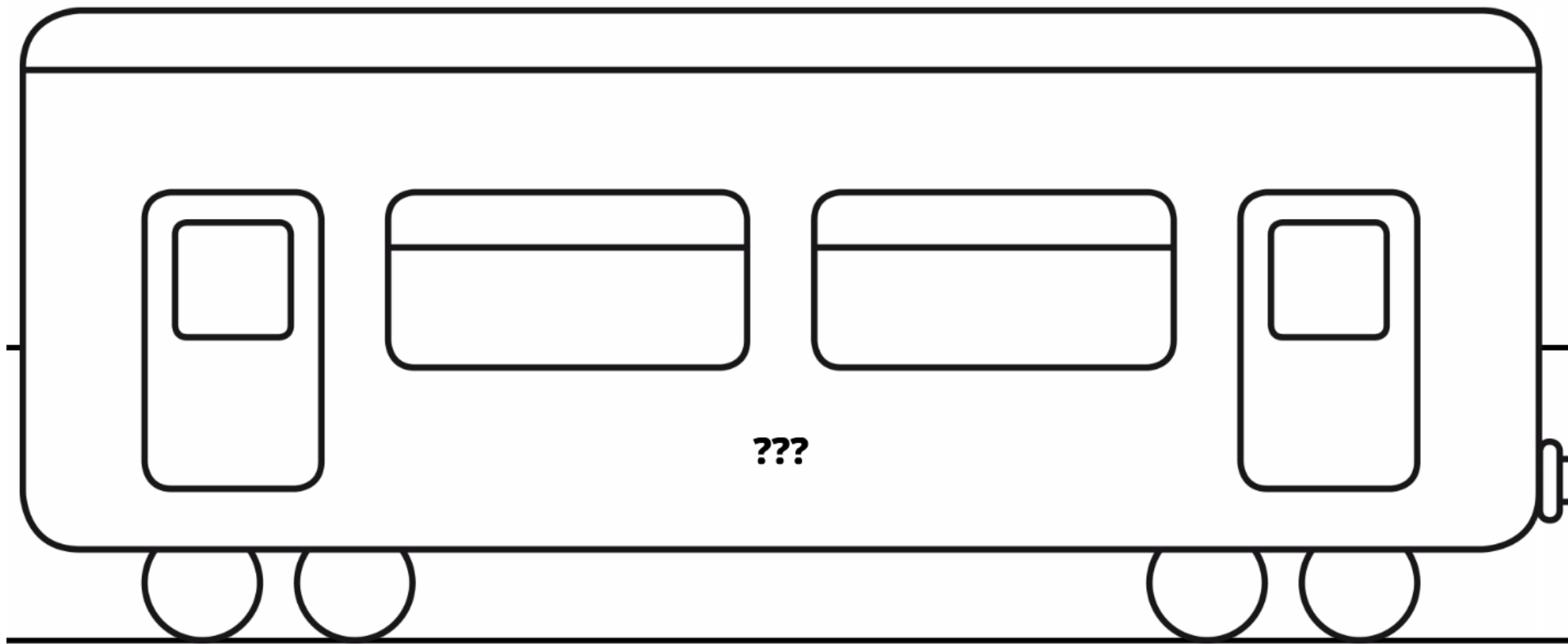
*Emily Mates*  
*ENN Technical Director*

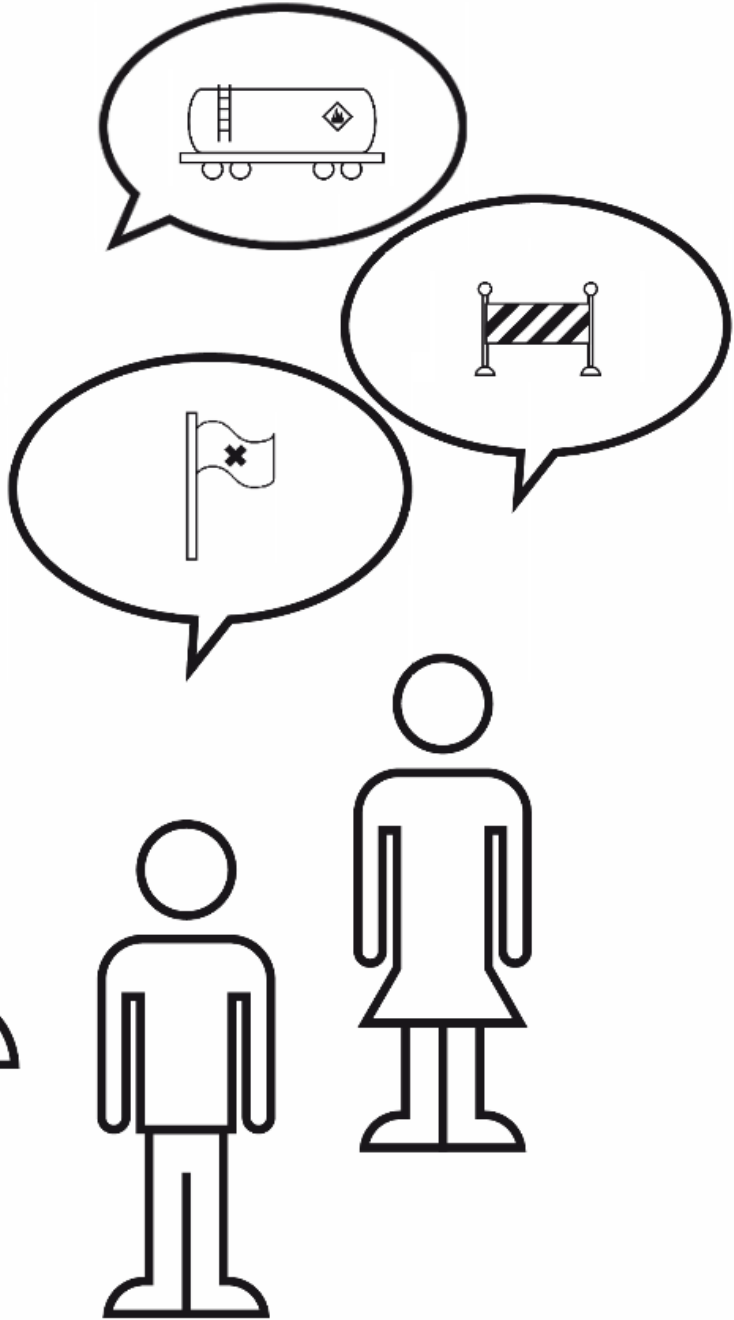
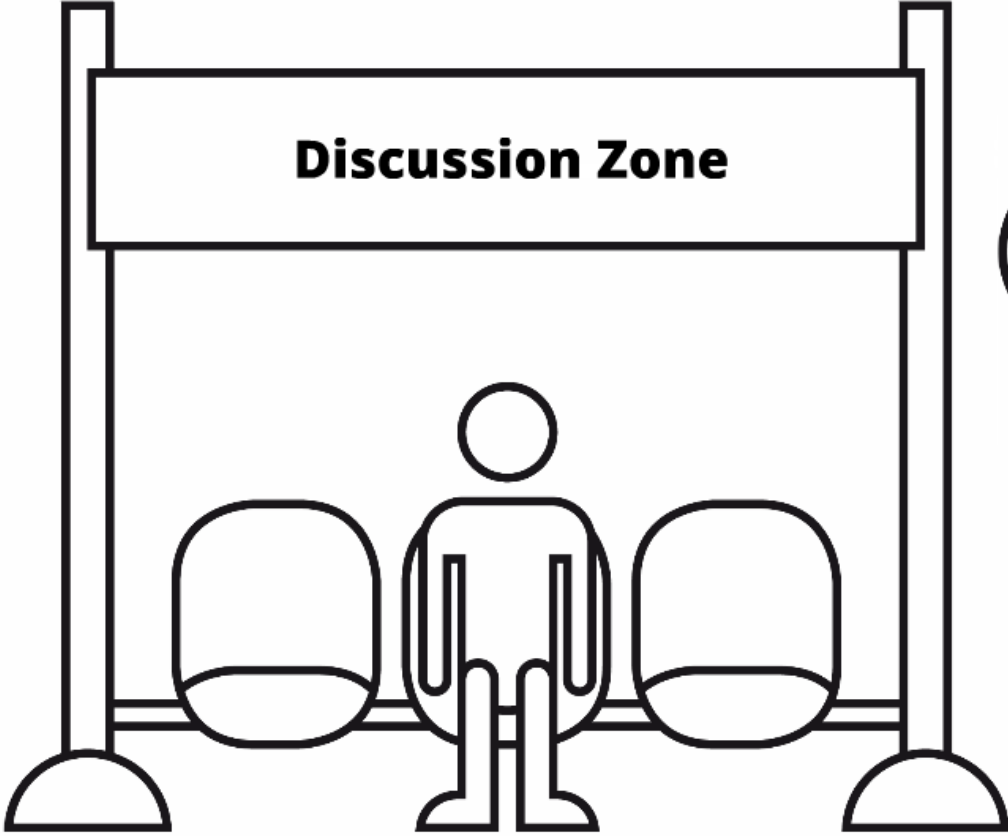
- Updated Operational Guidance in Infant and Young Child Feeding in Emergencies (release early 2017)
- Multi-sectoral programmers working in humanitarian response and emergency preparedness
- Provide do's and don'ts to minimise harm and maximise protection related to infant feeding

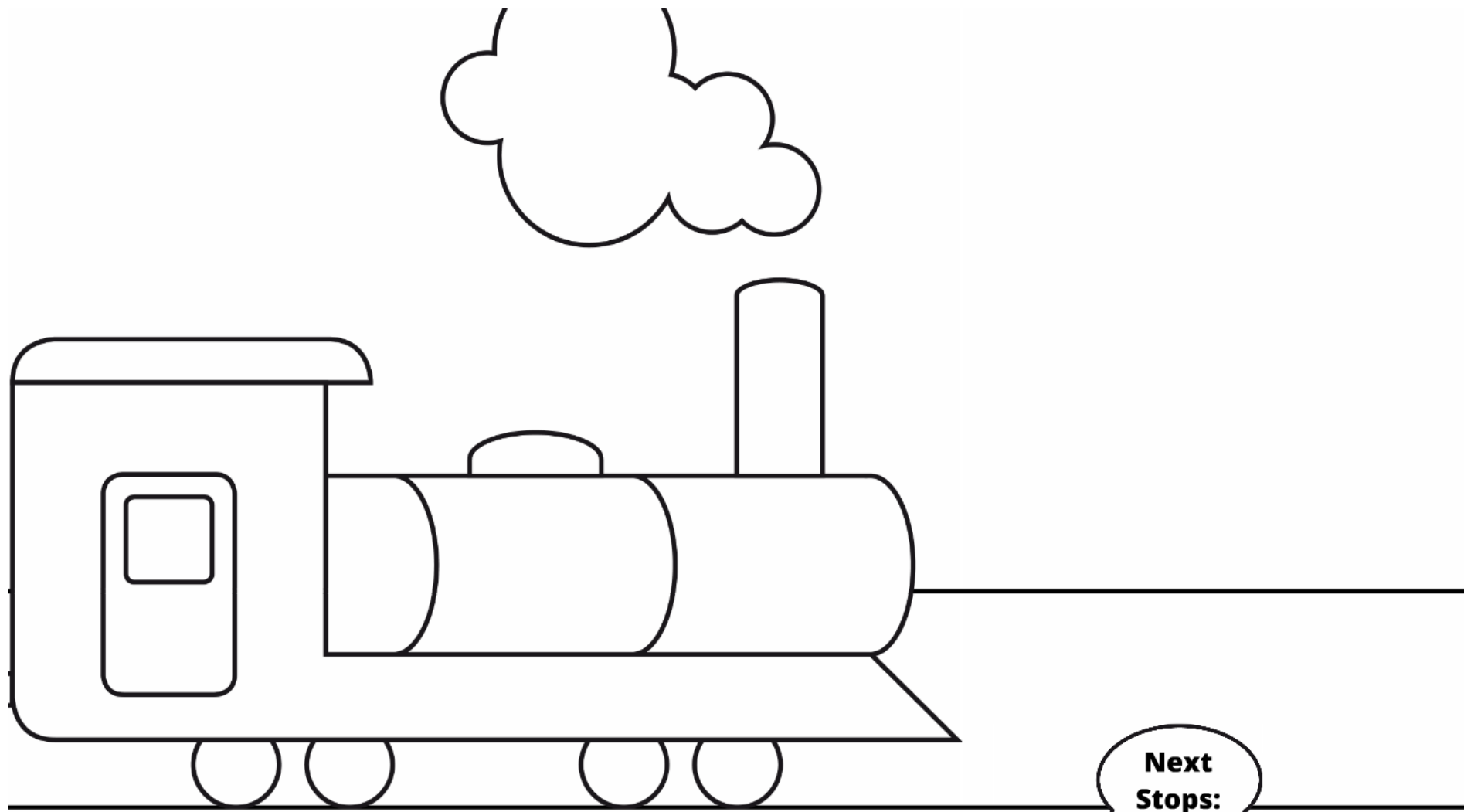


**Global Platforms**









**Next  
Steps:**

---

**SuSanA “WASH-Nutrition” Meeting**

Tuesday, August 30, 2016

14:00 – 15:30

(Room 362)

sustainable  
sanitation  
alliance

**Beyond the Drinking Glass:  
Expanding our Understanding of  
Water-Nutrition Linkages (IFPRI)**

Wednesday, August 31, 2016

11:00 – 12:30

(Room: FH Congress Hall A)